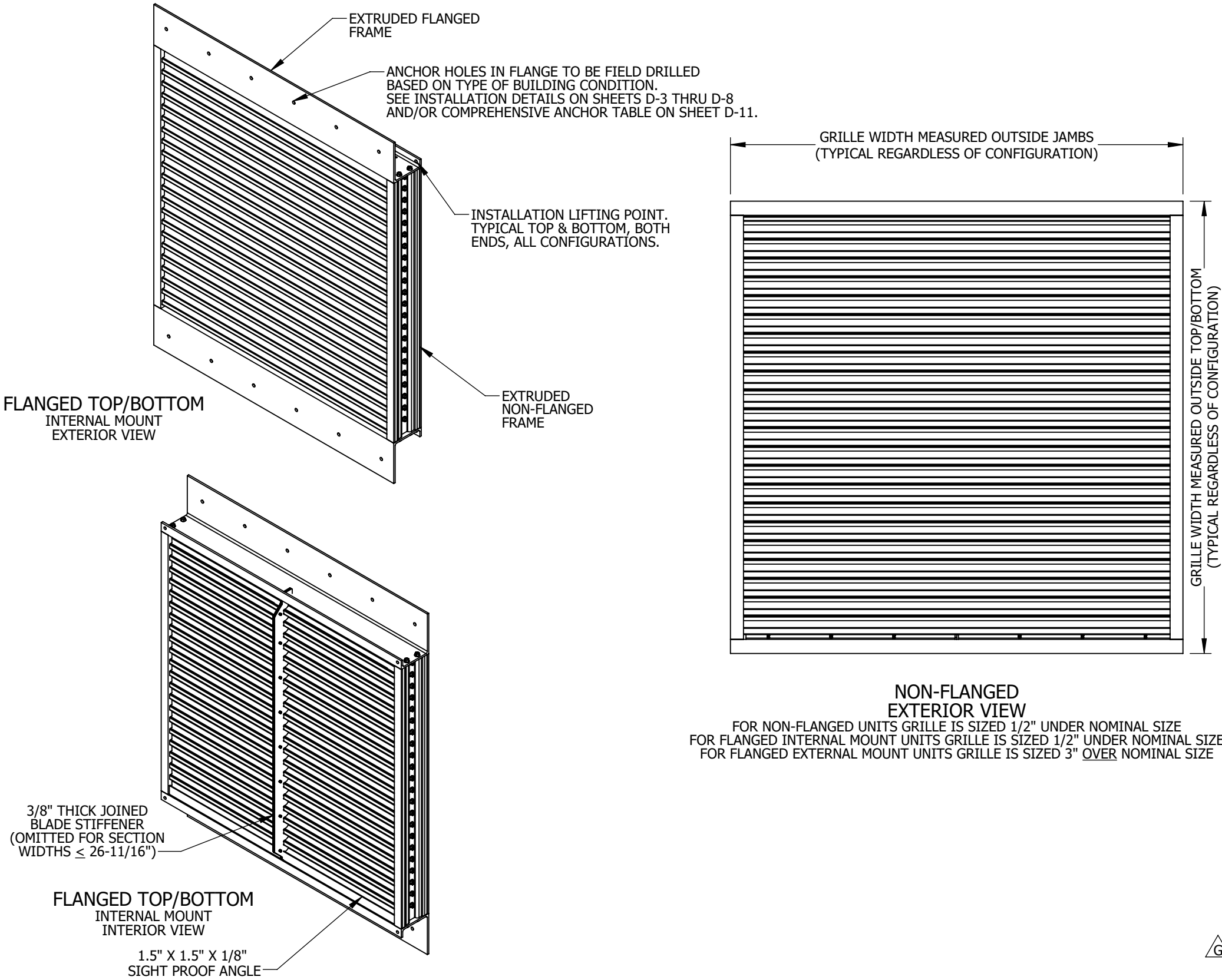



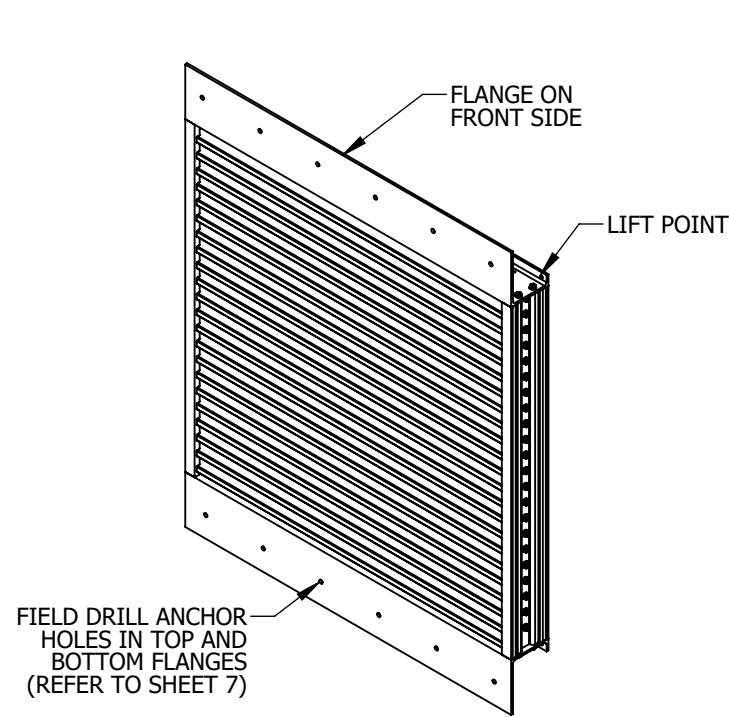
I:\Engineering Library\ECN-EIN\2023\ECN 23-0089 - XAV-545 Installation Dwg Update\Models\



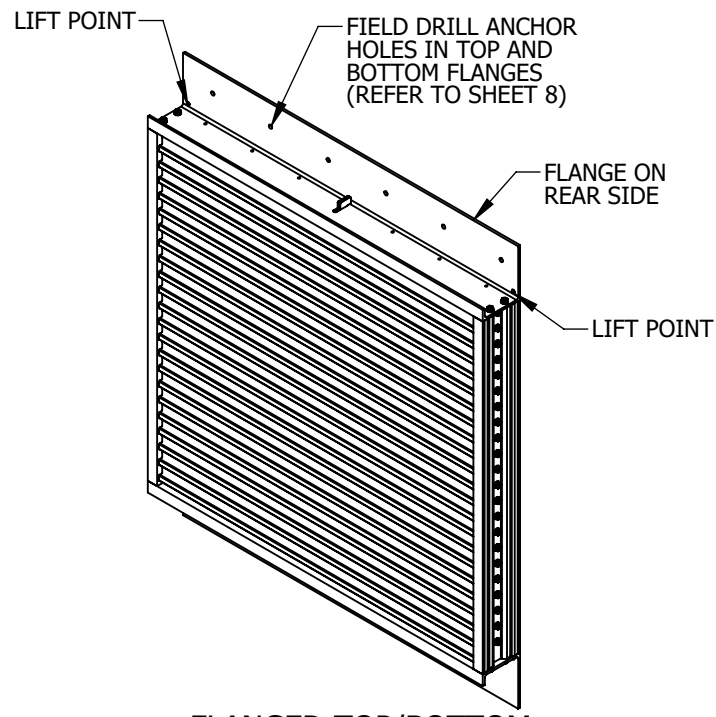
- NOTES:
- 1. BUILDING CONDITION MAX. OPENING ID FOR A SINGLE SECTION IS 48"Wx96"H. BUILDING CONDITION MIN. OPENING ID IS 12"Wx12"H. FOR MULTI-SECTIONS, UNLIMITED CONDITION OPENING WIDTH x SINGLE SECTION OPENING HIGH or UNLIMITED CONDITION OPENING HEIGHT x SINGLE SECTION OPENING WIDTH. ACTUAL SIZE OF LOUVER SECTIONS IS DEPENDENT ON INSTALLATION METHOD.
  - 2. THIS DRAWING INCLUDES INSTALLATION DETAILS TO ATTAIN A 300-PSF DESIGN PRESSURE ACROSS ALL SIZES AND IMPACT RESISTANCE PER FEMA 361/320 AND ICC 500.
  - 3. GRILLE TESTED FOR LARGE MISSILE IMPACT TEST WITH 15 LB 2 X 4 AND 100 MPH VELOCITY.
  - 4. IT IS ASSUMED THAT THE GRILLE SYSTEMS DO NOT SUPPORT ANY LOADS TRANSFERRED FROM THE BUILDING CONDITION.
  - 5. IT IS ASSUMED THAT THE BUILDING CONDITIONS ARE ADEQUATELY DESIGNED TO SUPPORT LOADS IMPARTED BY THE GRILLE.
  - 6. GRILLE DOES NOT PREVENT MOISTURE INGRESS. CRITICAL EQUIPMENT SHOULD BE PROTECTED.
  - 7. ALL HARDWARE SHOWN IS SUPPLIED BY POTTORFF UNLESS OTHERWISE SPECIFIED. HARDWARE IS SHIPPED LOOSE, MILL FINISH.
  - 8. SEPARATION OF DISSIMILAR METALS/ ALUM. TO STEEL SHOULD BE TAKEN INTO CONSIDERATION, AND IS BY OTHERS UNLESS SPECIFIED OTHERWISE.
  - 9. ALL BACKER ROD, SEALANT/CAULKING IS SUPPLIED BY OTHERS.
  - 10. ALL HOLES, HARDWARE, ANCHORS, AND/OR SHIMS REQUIRED TO INSTALL UNITS TO BUILDING, STRUCTURE, OR EXISTING CONDITION BY OTHERS.
  - 11. APPROXIMATE WEIGHT FOR GRILLE IS 11 LBS/SQ-FT.

H	UPDATE DIMENSIONS SHEET D-8 (ECN 23-0089)	10/16/2023	MSM	UNLESS OTHERWISE SPECIFIED DIMENSION ARE IN INCHES.  TOLERANCE UNLESS NOTED: X.X ±0.060 X.XX ±0.030 X.XXX ±0.010 ANGLE ±1° FRACTION ±1/16  MAX HOLE BREAKOUT: 15% OF MATERIAL THICKNESS	5101 Blue Mound Road Fort Worth, Texas 76106 Phone: 817-509-2300 Fax: 817-831-3110	<div>THIRD ANGLE PROJECTION</div> <div></div> <div>ALL-LITE</div> <div>THIS DRAWING AND THE DESIGN REPRESENTED ARE THE CONFIDENTIAL AND PROPRIETARY PROPERTY OF PCI INDUSTRIES AND MAY NOT BE DISCLOSED, LOANED, COPIED, OR USED FOR ANY PURPOSE OTHER THAN DESIGN REVIEW AND APPROVAL WITHOUT THE EXPRESS WRITTEN CONSENT OF PCI INDUSTRIES.</div>	DRAWING DESCR: COVER SHEET					
G	UPDATE NOTES (ECN 23-0041)	4/5/2023	MSM				PROJECT: XAV-545 FEMA 361/320 GRILLE ASSEMBLY & INSTALLATION DETAILS					
F	ECN 22-0105	1/30/2023	MSM				LOCATION:					
E	ECN 21-0020	3/11/2021	MRS				CUSTOMER:					
D	ECN 18-0054	9/21/2018	LGH / NWW				PROJ. MGR.: NATHAN WOODWORTH					
C	REVISED STATIC PRESSURE TABLE	4/4/2018	JG	DRAWN BY: LGH								
REV. NO.	DESCRIPTION	DATE	DRAWN BY	ORDER NUMBER								
				DATE: 12/14/2017		CHK'D BY: BAF		P.O. NUMBER		DRAWING NUMBER		
				SHEET: 1 of 17		SCALE: NONE				60132 C-1		

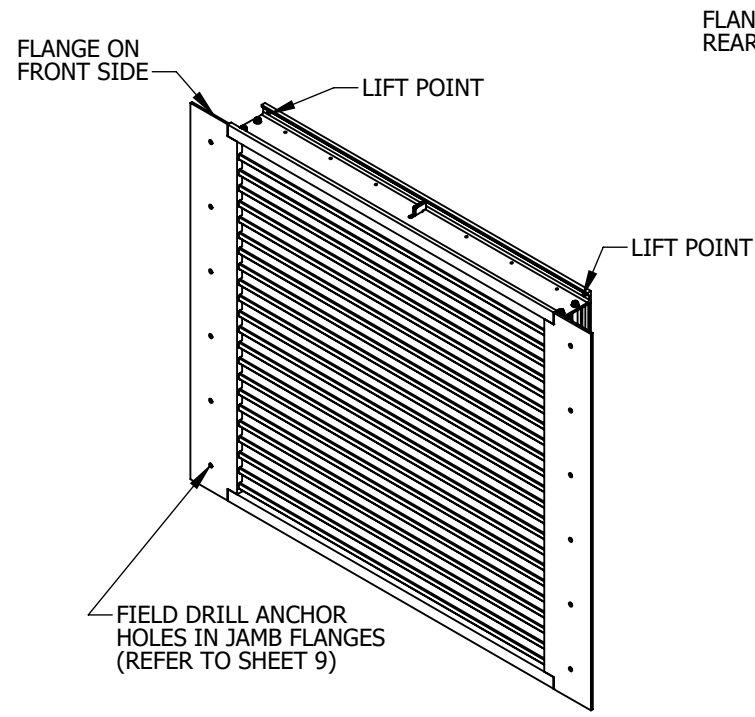
I:\Engineering Library\ECN-EIN\2023\ECN 23-0089 - XAV-545 Installation Dwg Update\Models\



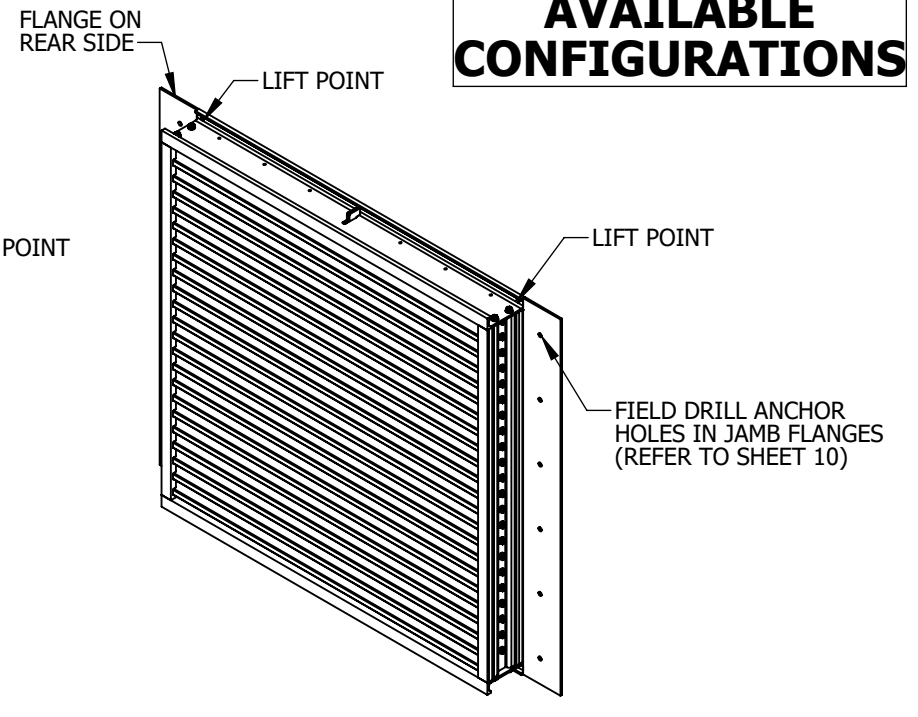
FLANGED TOP/BOTTOM  
INTERNAL MOUNT  
(NOT AVAILABLE IF MORE THAN ONE SECTION HIGH)



FLANGED TOP/BOTTOM  
EXTERNAL MOUNT  
(NOT AVAILABLE IF MORE THAN ONE SECTION HIGH)

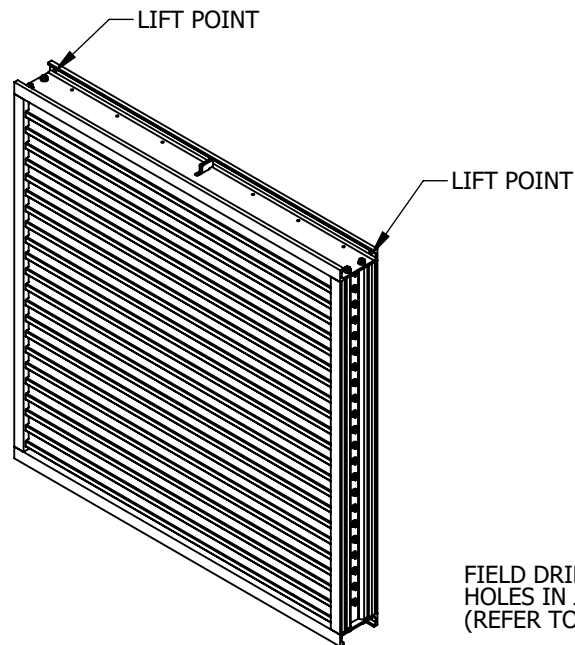


FLANGED JAMBS  
INTERNAL MOUNT  
(NOT AVAILABLE IF MORE THAN ONE SECTION WIDE)

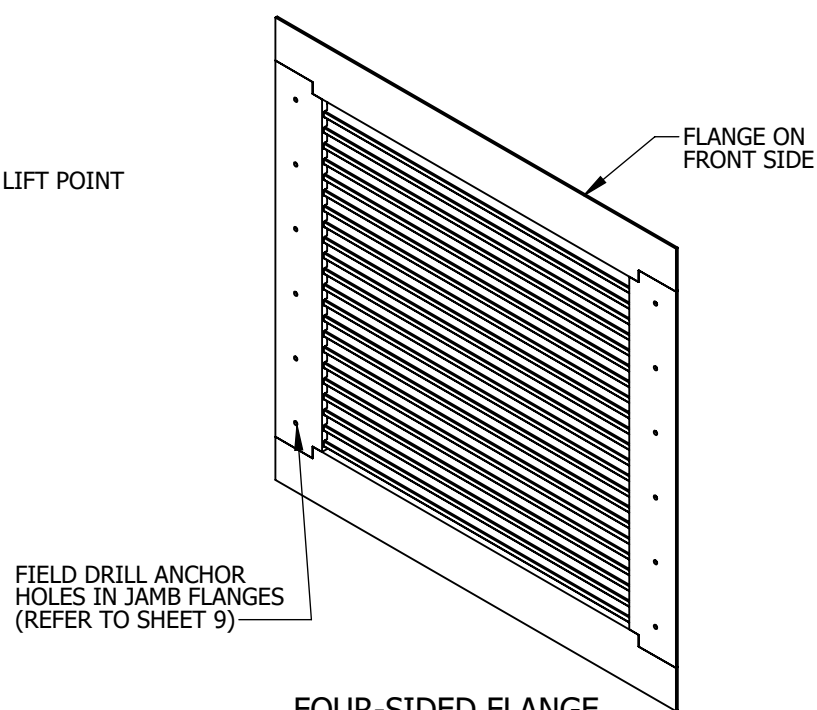


FLANGED JAMBS  
EXTERNAL MOUNT  
(NOT AVAILABLE IF MORE THAN ONE SECTION WIDE)

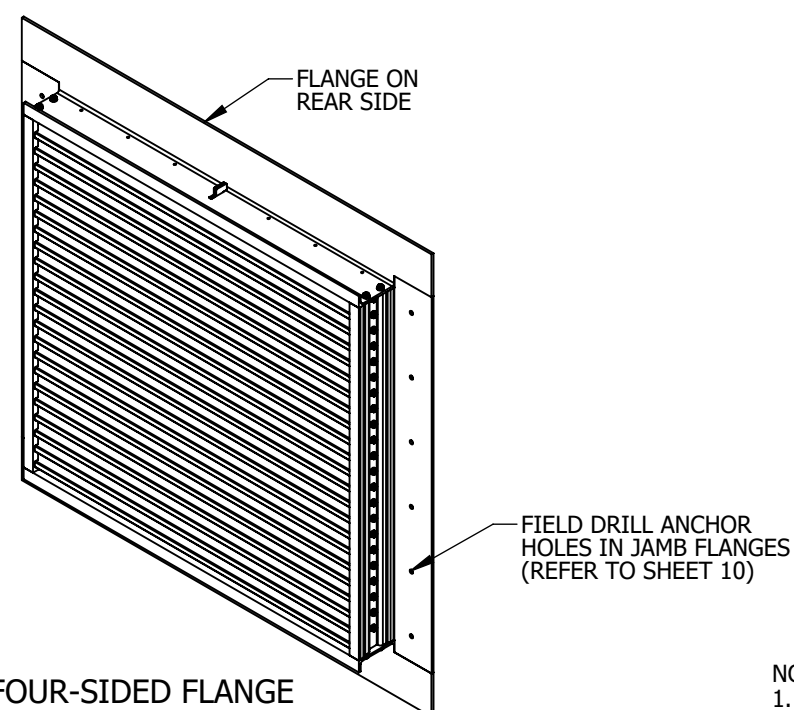
## AVAILABLE CONFIGURATIONS



NON-FLANGED



FOUR-SIDED FLANGE  
INTERNAL MOUNT  
(AVAILABLE FOR SINGLE SECTIONS ONLY)



FOUR-SIDED FLANGE  
EXTERNAL MOUNT  
(AVAILABLE FOR SINGLE SECTIONS ONLY)

- NOTES:
1. INSTALLATION LIFTING POINTS TYPICAL AT TOP AND BOTTOM OF LOUVER. LOCATION OF LIFTING POINTS ARE ALWAYS ON THE REAR SIDE OF THE LOUVER AND DEPENDS ON THE ORIENTATION ORDERED.

H	UPDATE DIMENSIONS SHEET D-8 (ECN 23-0089)	10/16/2023	MSM
G	UPDATE NOTES (ECN 23-0041)	4/5/2023	MSM
F	ECN 22-0105	1/30/2023	MSM
E	ECN 21-0020	3/11/2021	MRS
D	ECN 18-0054	9/21/2018	LGH / NWW
C	REVISED STATIC PRESSURE TABLE	4/4/2018	JG
REV. NO.	DESCRIPTION	DATE	DRAWN BY

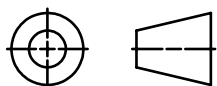
UNLESS OTHERWISE SPECIFIED  
DIMENSION ARE IN INCHES.

TOLERANCE UNLESS NOTED:  
X.X ±0.060  
X.XX ±0.030  
X.XXX ±0.010  
ANGLE ±1°  
FRACTION ±1/16

MAX HOLE BREAKOUT:  
15% OF MATERIAL THICKNESS

5101 Blue Mound Road  
Fort Worth, Texas 76106  
Phone: 817-509-2300  
Fax: 817-831-3110

THIRD ANGLE PROJECTION

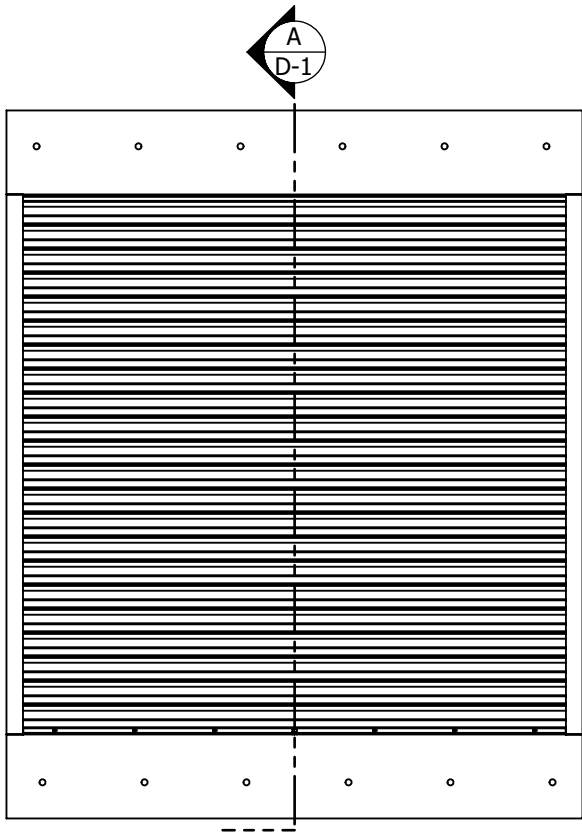


# ALL-LITE

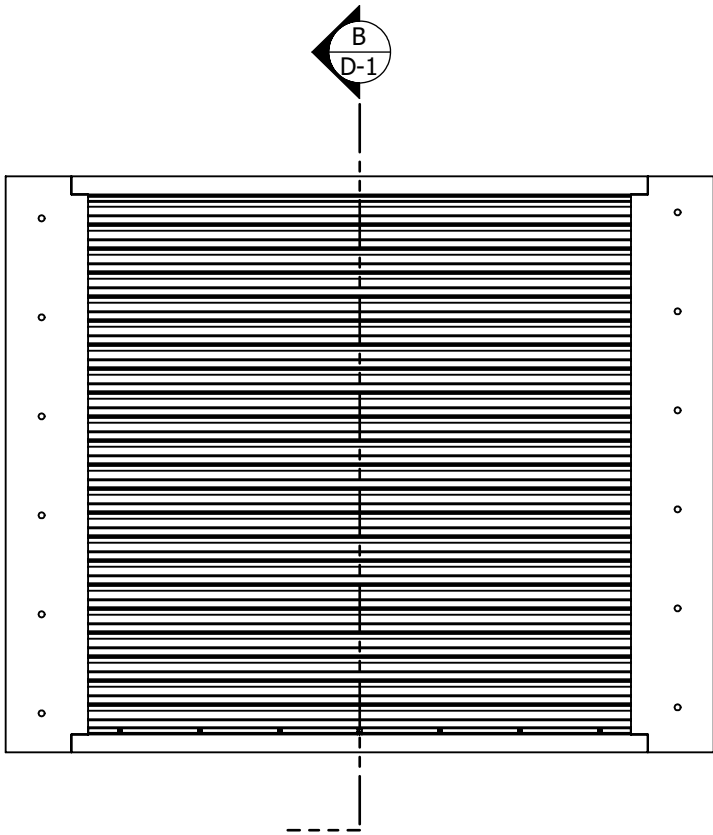
THIS DRAWING AND THE DESIGN REPRESENTED ARE  
THE CONFIDENTIAL AND PROPRIETARY PROPERTY OF  
PCI INDUSTRIES AND MAY NOT BE DISCLOSED, LOANED,  
COPIED, OR USED FOR ANY PURPOSE OTHER THAN  
DESIGN REVIEW AND APPROVAL WITHOUT THE  
EXPRESS WRITTEN CONSENT OF PCI INDUSTRIES.

DRAWING DESCR: AVAILABLE CONFIGURATIONS				
PROJECT: XAV-545 FEMA 361/320 GRILLE ASSEMBLY & INSTALLATION DETAILS				
LOCATION:				
CUSTOMER:				
PROJ. MGR.: NATHAN WOODWORTH		DRAWN BY: LGH		
DATE: 12/14/2017	CHK'D BY: JG/nww	ORDER NUMBER	P.O. NUMBER	DRAWING NUMBER
SHEET: 2 of 17	SCALE: NONE			60132 C-2

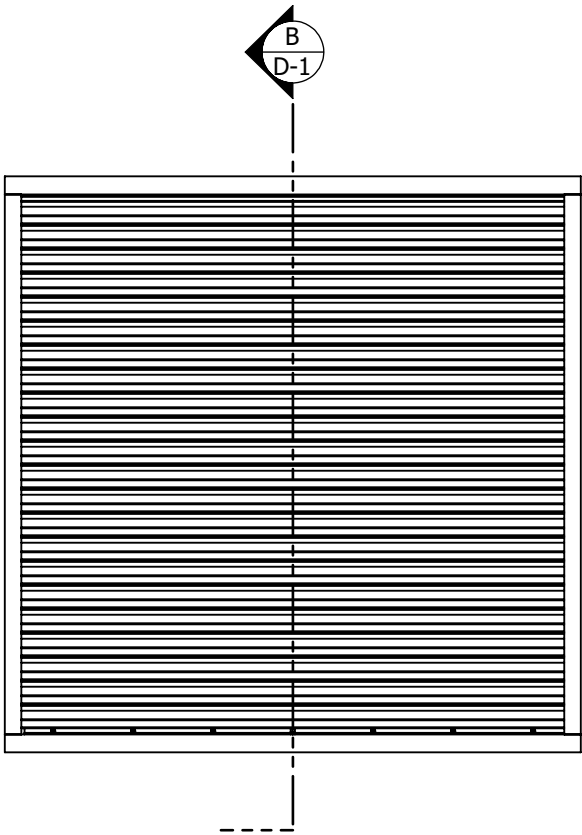
SINGLE SECTION ASSEMBLIES



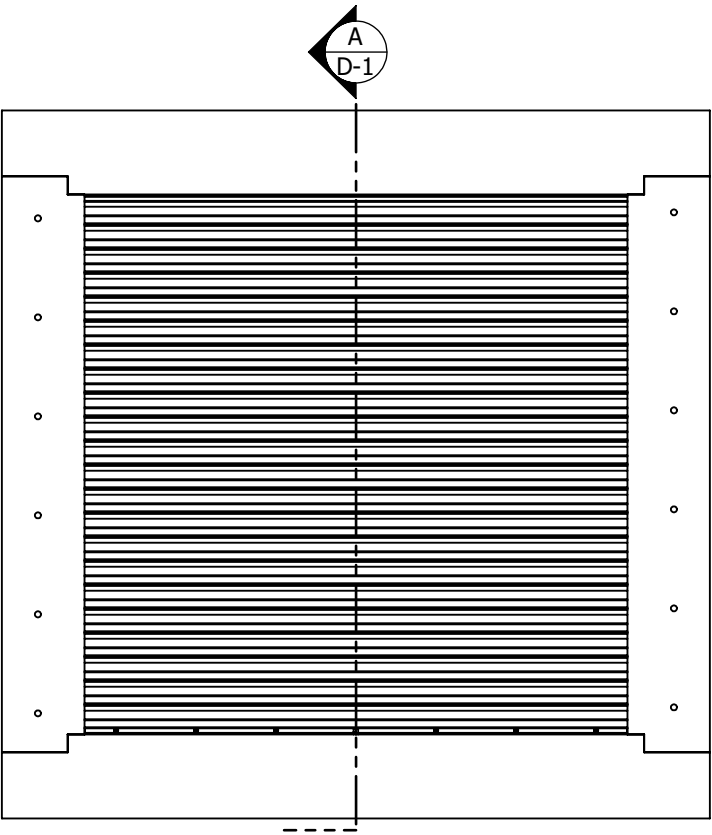
SINGLE SECTION ARRANGEMENT  
FLANGED TOP/BOTTOM  
INTERNAL MOUNT, EXTERIOR VIEW



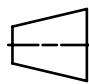

SINGLE SECTION ARRANGEMENT  
FLANGED JAMBS  
INTERNAL MOUNT, EXTERIOR VIEW



SINGLE SECTION ARRANGEMENT  
NON-FLANGED  
INTERNAL MOUNT, EXTERIOR VIEW

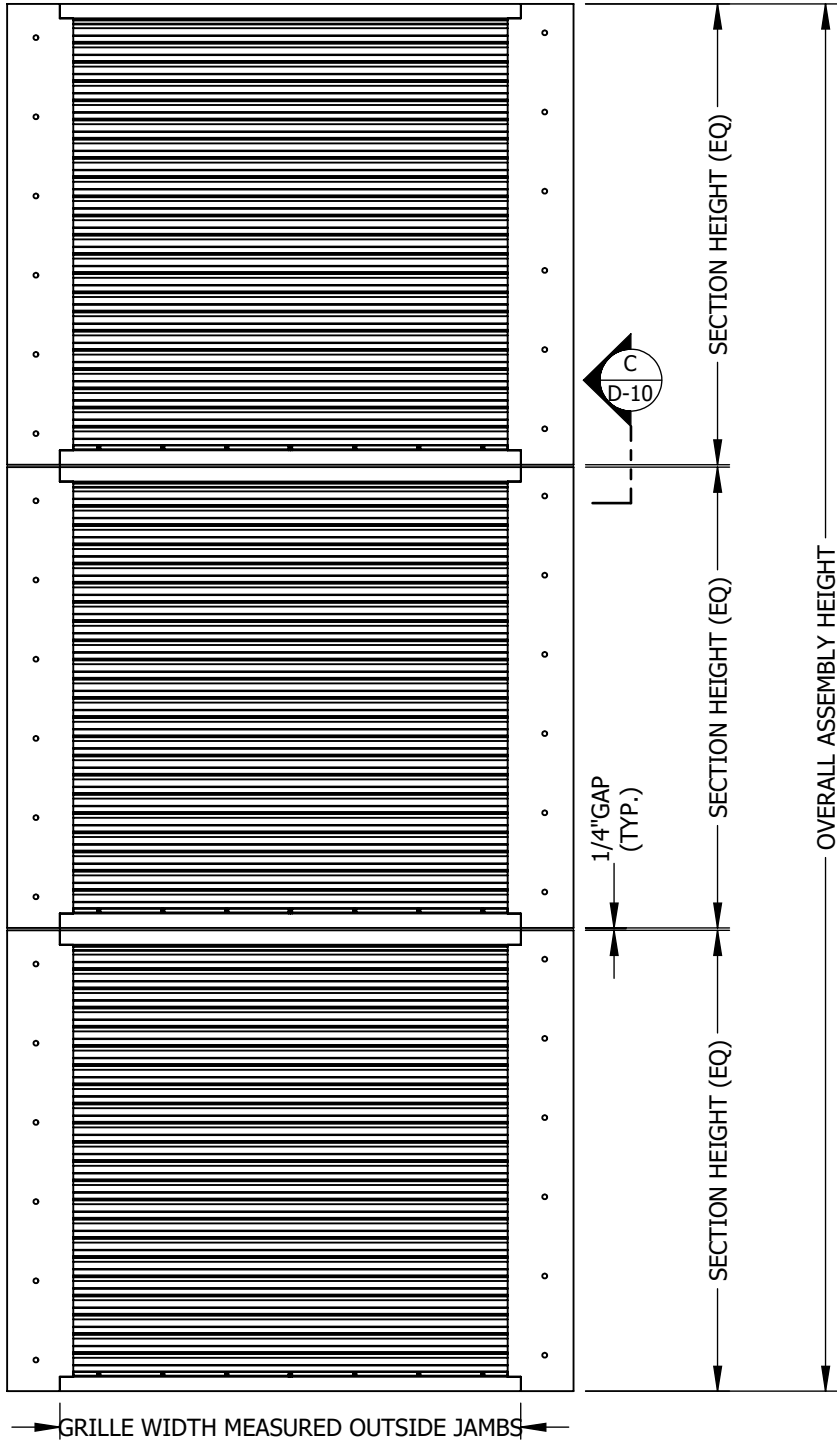


SINGLE SECTION ARRANGEMENT  
FOUR-SIDED FLANGE  
INTERNAL MOUNT, EXTERIOR VIEW

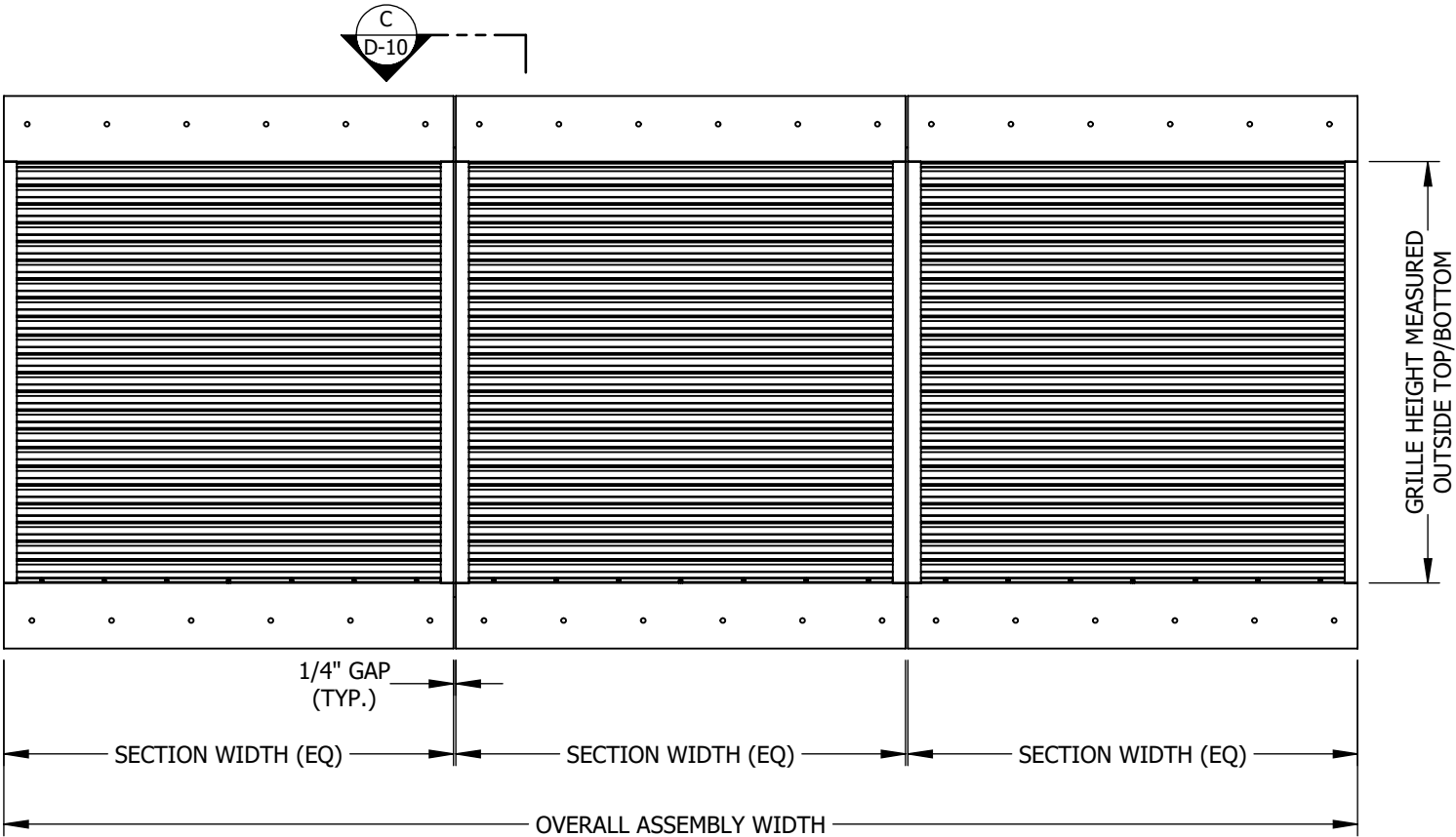
H	UPDATE DIMENSIONS SHEET D-8 (ECN 23-0089)	10/16/2023	MSM	UNLESS OTHERWISE SPECIFIED DIMENSION ARE IN INCHES.  TOLERANCE UNLESS NOTED: X.X ±0.060 X.XX ±0.030 X.XXX ±0.010 ANGLE ±1° FRACTION ±1/16  MAX HOLE BREAKOUT: 15% OF MATERIAL THICKNESS	5101 Blue Mound Road Fort Worth, Texas 76106 Phone: 817-509-2300 Fax: 817-831-3110	<div>ALL-LITE</div> <div>THIS DRAWING AND THE DESIGN REPRESENTED ARE THE CONFIDENTIAL AND PROPRIETARY PROPERTY OF PCI INDUSTRIES AND MAY NOT BE DISCLOSED, LOANED, COPIED, OR USED FOR ANY PURPOSE OTHER THAN DESIGN REVIEW AND APPROVAL WITHOUT THE EXPRESS WRITTEN CONSENT OF PCI INDUSTRIES.</div>	DRAWING DESCR: ELEVATION VIEWS, SINGLE SECTION ASSEMBLIES			
G	UPDATE NOTES (ECN 23-0041)	4/5/2023	MSM				PROJECT: XAV-545 FEMA 361/320 GRILLE ASSEMBLY & INSTALLATION DETAILS			
F	ECN 22-0105	1/30/2023	MSM				LOCATION:			
E	ECN 21-0020	3/11/2021	MRS				CUSTOMER:			
D	ECN 18-0054	9/21/2018	LGH / NWW				PROJ. MGR.: NATHAN WOODWORTH		DRAWN BY: LGH	
C	REVISED STATIC PRESSURE TABLE	4/4/2018	JG	<div>THIRD ANGLE PROJECTION</div> <div></div>	DATE: 12/14/2017	CHK'D BY: JG/nww	ORDER NUMBER	P.O. NUMBER	DRAWING NUMBER	
REV. NO.	DESCRIPTION	DATE	DRAWN BY		SHEET: 3 of 17	SCALE: NONE			60132 E-1	

I:\Engineering Library\ECN-EIN\2023\ECN 23-0089 - XAV-545 Installation Dwg Update\Models\

MULTI SECTION ASSEMBLIES



MULTI-SECTION HIGH (UNLIMITED) ARRANGEMENT  
AVAILABLE IN FLANGED JAMBS OR  
NON-FLANGED CONFIGURATIONS ONLY  
FLANGED JAMBS SHOWN, INTERNAL MOUNT, EXTERIOR VIEW  
NON-FLANGED SIMILAR



MULTI-SECTION WIDE (UNLIMITED) ARRANGEMENT  
AVAILABLE IN FLANGED TOP/BOTTOM OR  
NON-FLANGED CONFIGURATIONS ONLY  
FLANGED TOP/BOTTOM SHOWN, INTERNAL MOUNT, EXTERIOR VIEW  
NON-FLANGED SIMILAR

- NOTES:
- MULTI-SECTION CONFIGURATIONS ARE AVAILABLE ONLY IN MULTI-SECTION HIGH X SINGLE SECTION WIDE OR MULTI-SECTION WIDE X SINGLE SECTION HIGH. NO PROVISIONS HAVE BEEN MADE FOR MULTI-SECTION HIGH X MULTI-SECTION WIDE CONFIGURATIONS.

H	UPDATE DIMENSIONS SHEET D-8 (ECN 23-0089)	10/16/2023	MSM
G	UPDATE NOTES (ECN 23-0041)	4/5/2023	MSM
F	ECN 22-0105	1/30/2023	MSM
E	ECN 21-0020	3/11/2021	MRS
D	ECN 18-0054	9/21/2018	LGH / NWW
C	REVISED STATIC PRESSURE TABLE	4/4/2018	JG
REV. NO.	DESCRIPTION	DATE	DRAWN BY

UNLESS OTHERWISE SPECIFIED  
DIMENSION ARE IN INCHES.

TOLERANCE UNLESS NOTED:

X.X	±0.060
X.XX	±0.030
X.XXX	±0.010
ANGLE	±1°
FRACTION	±1/16

MAX HOLE BREAKOUT:  
15% OF MATERIAL THICKNESS

5101 Blue Mound Road  
Fort Worth, Texas 76106  
Phone: 817-509-2300  
Fax: 817-831-3110

THIRD ANGLE PROJECTION

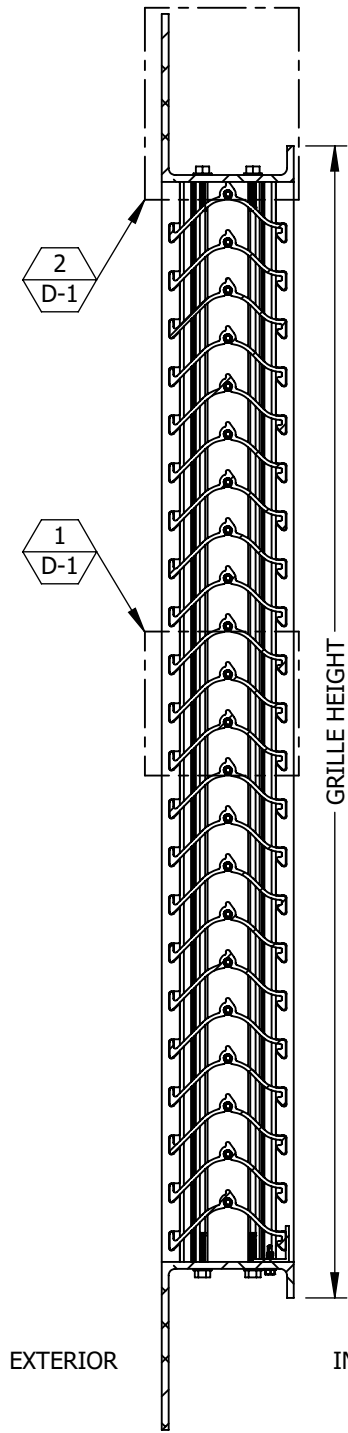


ALL-LITE

THIS DRAWING AND THE DESIGN REPRESENTED ARE  
THE CONFIDENTIAL AND PROPRIETARY PROPERTY OF  
PCI INDUSTRIES AND MAY NOT BE DISCLOSED, LOANED,  
COPIED, OR USED FOR ANY PURPOSE OTHER THAN  
DESIGN REVIEW AND APPROVAL WITHOUT THE  
EXPRESS WRITTEN CONSENT OF PCI INDUSTRIES.

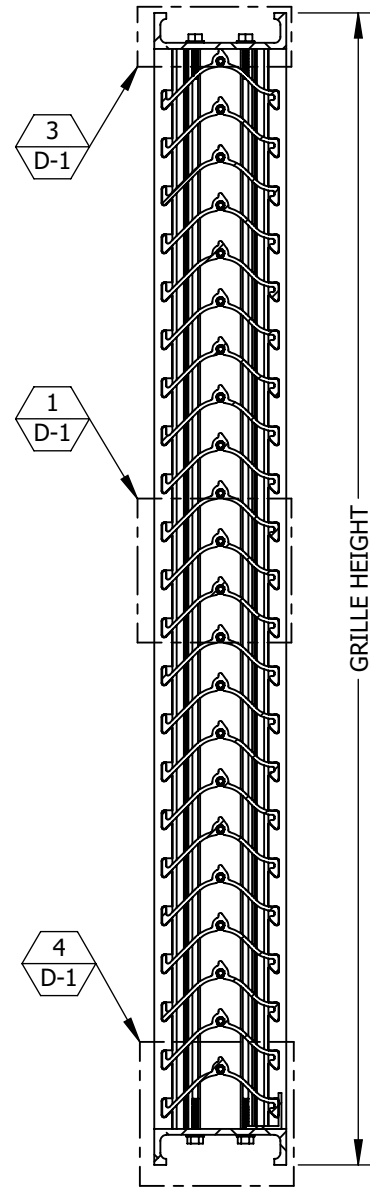
DRAWING DESCR: ELEVATION VIEWS, MULTIPLE SECTION ASSEMBLIES				
PROJECT: XAV-545 FEMA 361/320 GRILLE ASSEMBLY & INSTALLATION DETAILS				
LOCATION:				
CUSTOMER:				
PROJ. MGR.: NATHAN WOODWORTH		DRAWN BY: LGH		
DATE: 12/14/2017	CHK'D BY: JG/nww	ORDER NUMBER	P.O. NUMBER	DRAWING NUMBER
SHEET: 4 of 17	SCALE: AS NOTED			60132 E-2

I:\Engineering Library\ECN-EIN\2023\ECN 23-0089 - XAV-545 Installation Dwg Update\Models\



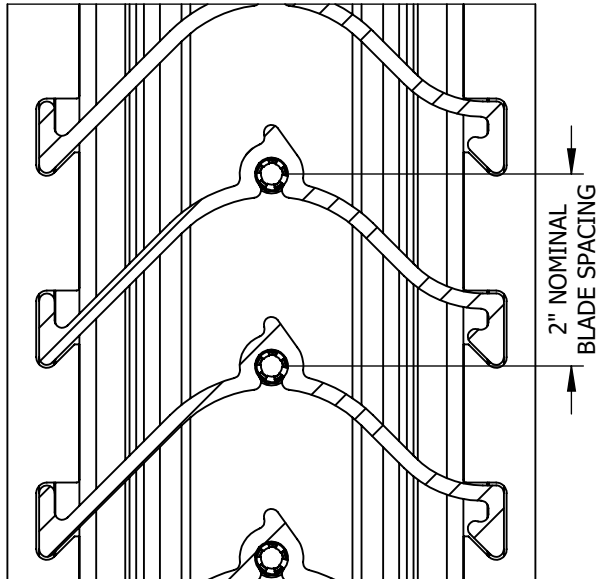
SECTION A VIEW  
1-1/2" = 1'-0" D-1 E-1

INTERNAL MOUNT ARRANGEMENT SHOWN  
EXTERNAL MOUNT HAS FLANGE OPPOSITE SIDE

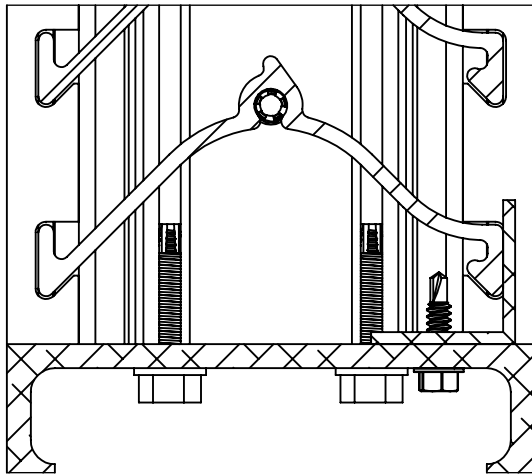


SECTION B VIEW  
1-1/2" = 1'-0" D-1 E-1

INTERNAL MOUNT ARRANGEMENT SHOWN  
NON-FLANGED ARRANGEMENT SIMILAR  
EXTERNAL MOUNT HAS FLANGE OPPOSITE SIDE

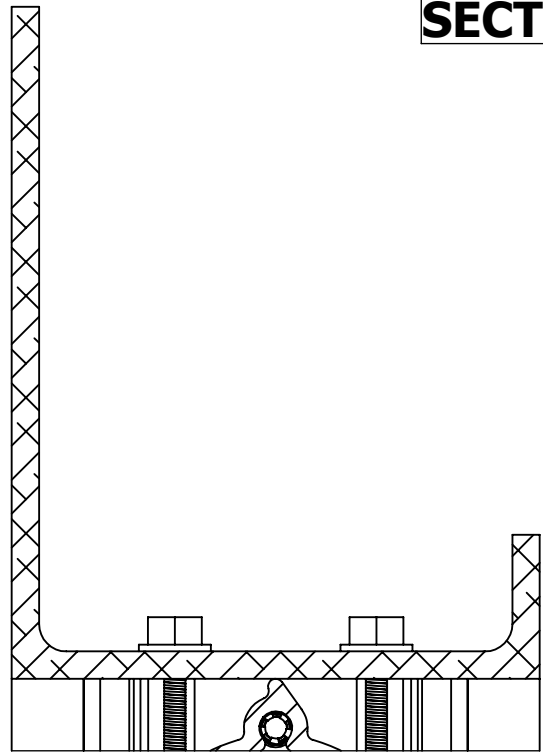


BLADE 1 DETAIL  
SCALE: 6" = 1'-0" D-1 D-1



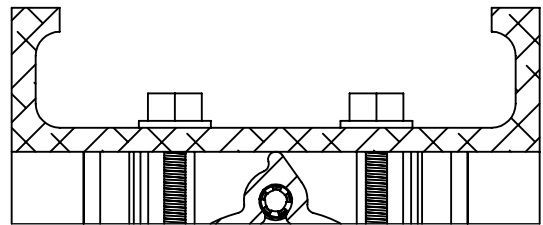
BOTTOM SIGHT GAP 4 DETAIL  
SCALE: 6" = 1'-0" D-1 D-1

## SECTIONS & DETAILS



FLANGED TOP 2 DETAIL  
SCALE: 6" = 1'-0" D-1 D-1

INTERNAL MOUNT TOP DETAIL SHOWN  
EXTERNAL MOUNT HAS FLANGE OPPOSITE SIDE  
FLANGED BOTTOM AND FLANGED JAMB DETAILS SIMILAR



NON-FLANGED TOP 3 DETAIL  
SCALE: 6" = 1'-0" D-1 D-1

INTERNAL MOUNT HEAD DETAIL SHOWN  
EXTERNAL MOUNT HAS FLANGE OPPOSITE SIDE  
NON-FLANGED BOTTOM AND NON-FLANGED JAMB DETAILS SIMILAR

H	UPDATE DIMENSIONS SHEET D-8 (ECN 23-0089)	10/16/2023	MSM
G	UPDATE NOTES (ECN 23-0041)	4/5/2023	MSM
F	ECN 22-0105	1/30/2023	MSM
E	ECN 21-0020	3/11/2021	MRS
D	ECN 18-0054	9/21/2018	LGH / NWW
C	REVISED STATIC PRESSURE TABLE	4/4/2018	JG
REV. NO.	DESCRIPTION	DATE	DRAWN BY

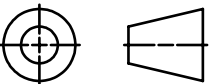
UNLESS OTHERWISE SPECIFIED  
DIMENSION ARE IN INCHES.

TOLERANCE UNLESS NOTED:  
X.X ±0.060  
X.XX ±0.030  
X.XXX ±0.010  
ANGLE ±1°  
FRACTION ±1/16

MAX HOLE BREAKOUT:  
15% OF MATERIAL THICKNESS

5101 Blue Mound Road  
Fort Worth, Texas 76106  
Phone: 817-509-2300  
Fax: 817-831-3110

THIRD ANGLE PROJECTION



# ALL-LITE

THIS DRAWING AND THE DESIGN REPRESENTED ARE  
THE CONFIDENTIAL AND PROPRIETARY PROPERTY OF  
PCI INDUSTRIES AND MAY NOT BE DISCLOSED, LOANED,  
COPIED, OR USED FOR ANY PURPOSE OTHER THAN  
DESIGN REVIEW AND APPROVAL WITHOUT THE  
EXPRESS WRITTEN CONSENT OF PCI INDUSTRIES.

DRAWING DESCR: SECTIONS & DETAILS

PROJECT: XAV-545 FEMA 361/320 GRILLE ASSEMBLY & INSTALLATION DETAILS

LOCATION:

CUSTOMER:

PROJ. MGR.: NATHAN WOODWORTH

DRAWN BY: LGH

DATE: 12/14/2017

CHK'D BY: JG/nww

ORDER NUMBER

P.O. NUMBER

DRAWING NUMBER

SHEET: 5 of 17

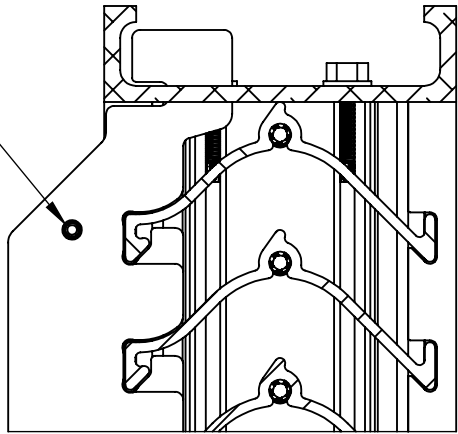
SCALE: AS NOTED

60132 D-1

I:\Engineering Library\ECN-EIN\2023\ECN 23-0089 - XAV-545 Installation Dwg Update\Models\

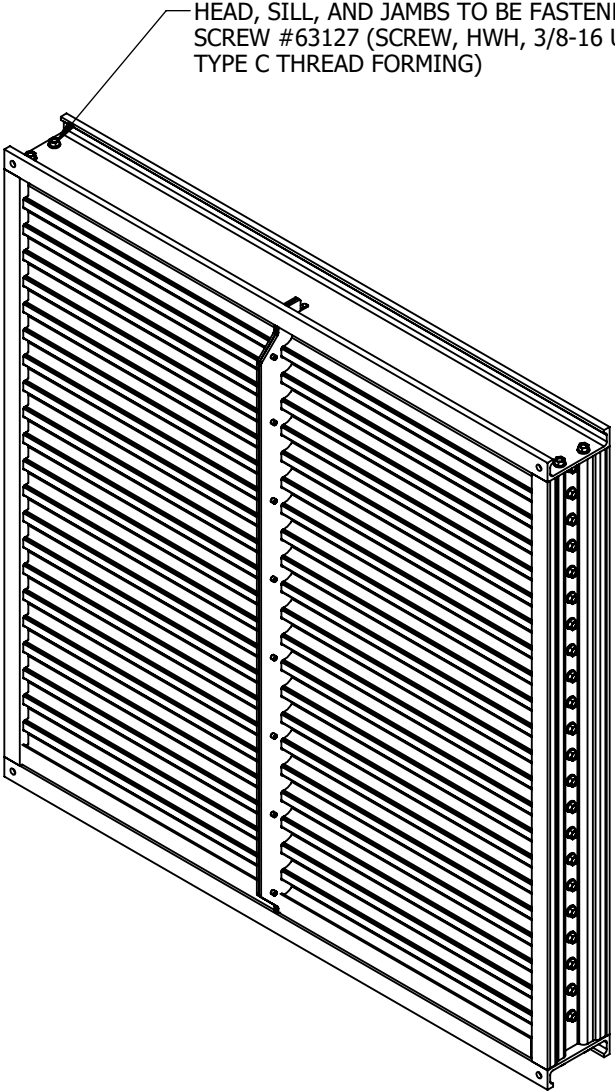
ASSEMBLY HARDWARE DETAILS

STIFFENERS TO BE FASTENED WITH  
RIVET #60016 (1/4" MAGNA-LOK RIVET  
MGLP-B8-E)

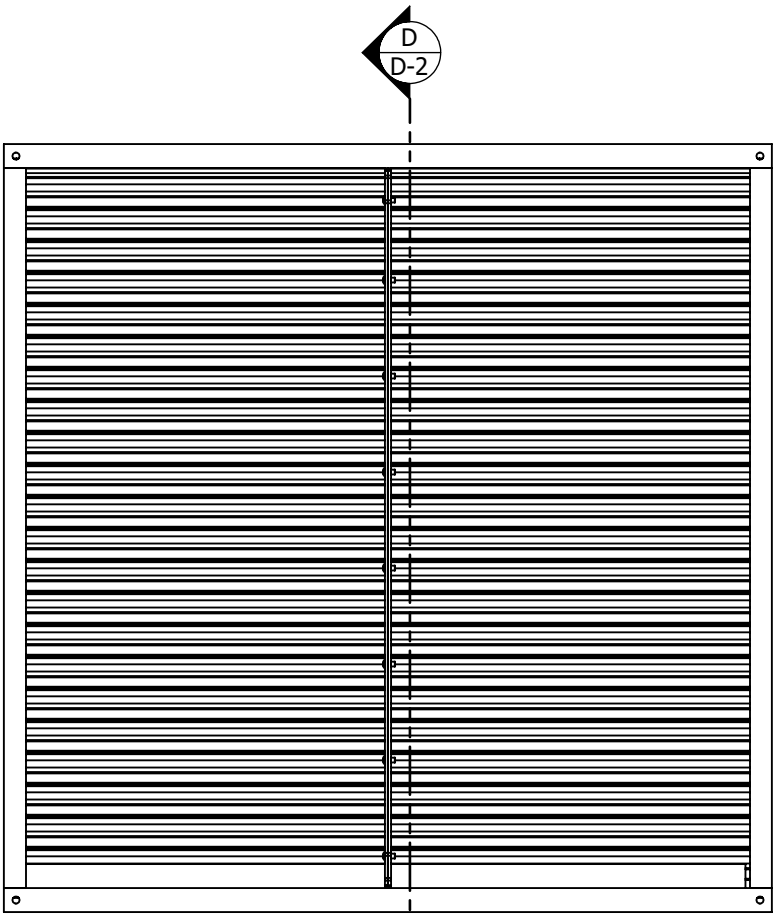


STIFFENER 1  
SCALE: 4" = 1'-0" D-2 D-2

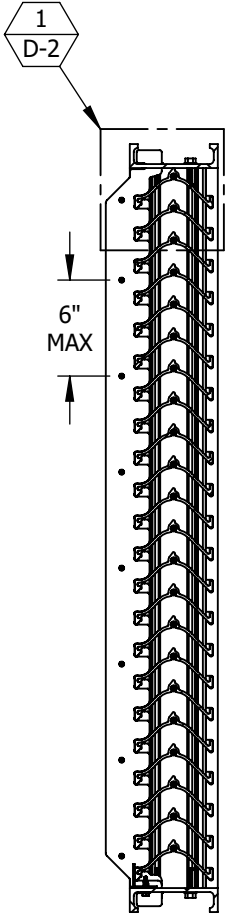
HEAD, SILL, AND JAMBS TO BE FASTENED WITH  
SCREW #63127 (SCREW, HWH, 3/8-16 UNC X 1-1/2" LG.  
TYPE C THREAD FORMING)



INTERIOR ISOMETRIC VIEW  
NON-FLANGED CONFIGURATION SHOWN



INTERIOR ELEVATION VIEW  
NON-FLANGED CONFIGURATION SHOWN



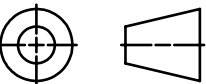
INTERIOR EXTERIOR  
SECTION D VIEW  
SCALE: 1" = 1'-0" D-2 D-2

H	UPDATE DIMENSIONS SHEET D-8 (ECN 23-0089)	10/16/2023	MSM
G	UPDATE NOTES (ECN 23-0041)	4/5/2023	MSM
F	ECN 22-0105	1/30/2023	MSM
E	ECN 21-0020	3/11/2021	MRS
D	ECN 18-0054	9/21/2018	LGH / NWW
C	REVISED STATIC PRESSURE TABLE	4/4/2018	JG
REV. NO.	DESCRIPTION	DATE	DRAWN BY

UNLESS OTHERWISE SPECIFIED DIMENSION ARE IN INCHES.	
TOLERANCE UNLESS NOTED:	
X.X	±0.060
X.XX	±0.030
X.XXX	±0.010
ANGLE	±1°
FRACTION	±1/16
MAX HOLE BREAKOUT: 15% OF MATERIAL THICKNESS	

5101 Blue Mound Road  
Fort Worth, Texas 76106  
Phone: 817-509-2300  
Fax: 817-831-3110

THIRD ANGLE PROJECTION

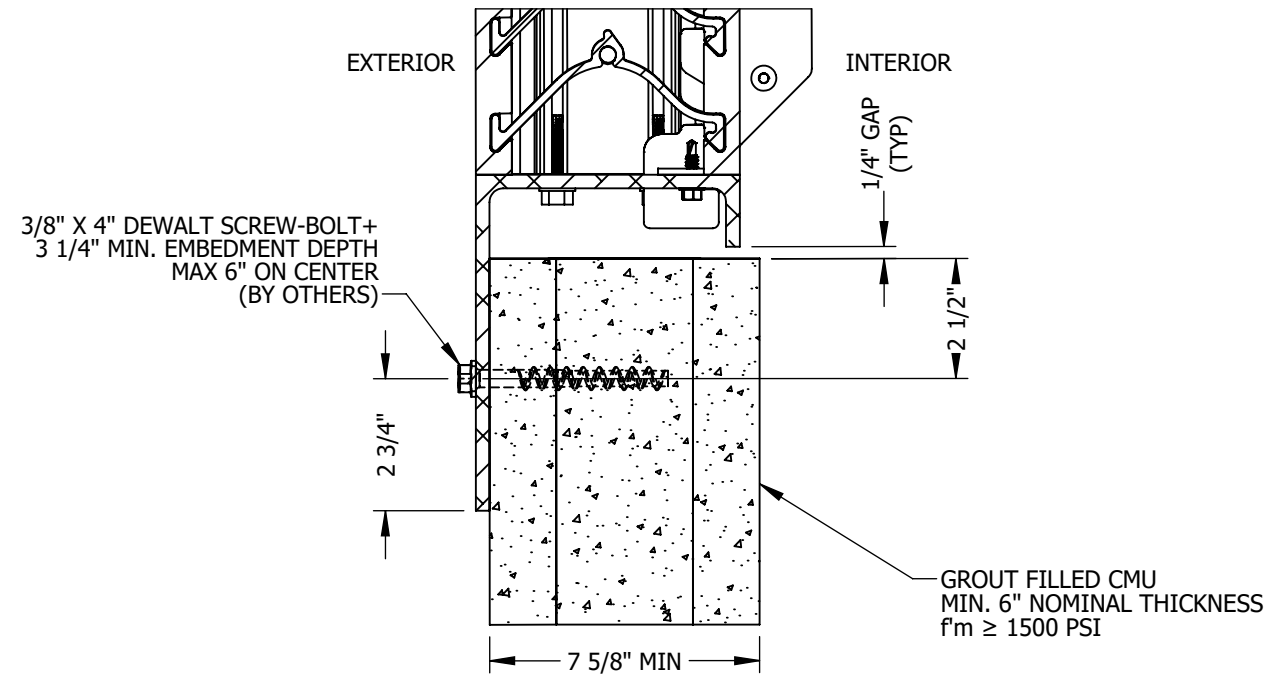


ALL-LITE

THIS DRAWING AND THE DESIGN REPRESENTED ARE  
THE CONFIDENTIAL AND PROPRIETARY PROPERTY OF  
PCI INDUSTRIES AND MAY NOT BE DISCLOSED, LOANED,  
COPIED, OR USED FOR ANY PURPOSE OTHER THAN  
DESIGN REVIEW AND APPROVAL WITHOUT THE  
EXPRESS WRITTEN CONSENT OF PCI INDUSTRIES.

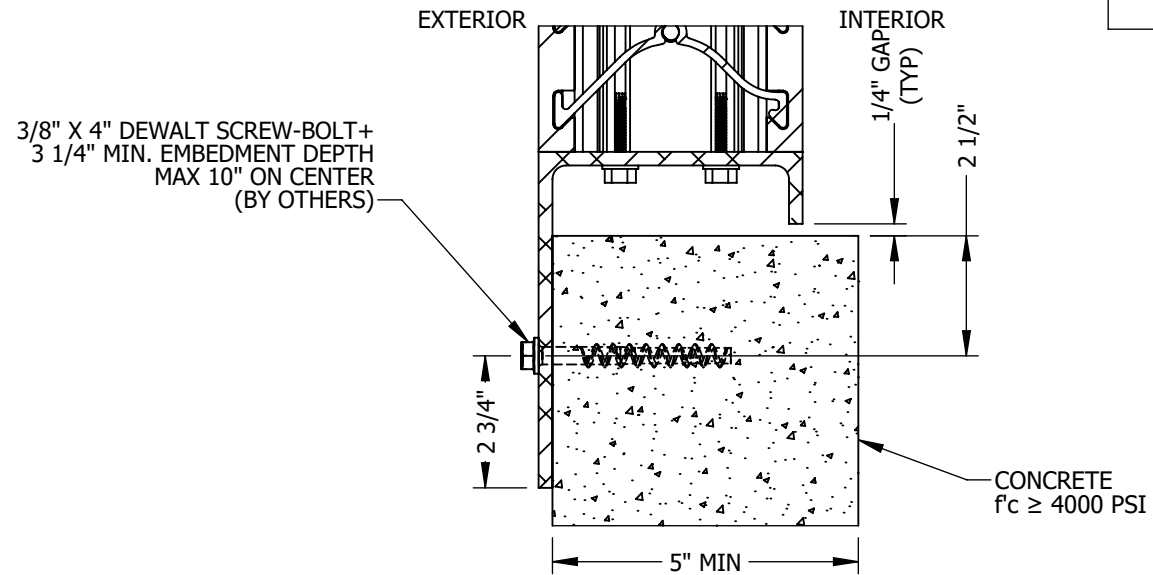
DRAWING DESCR: WELDING DETAILS				
PROJECT: XAV-545 FEMA 361/320 GRILLE ASSEMBLY & INSTALLATION DETAILS				
LOCATION:				
CUSTOMER:				
PROJ. MGR.: NATHAN WOODWORTH		DRAWN BY: LGH		
DATE: 12/14/2017	CHK'D BY: JG/nww	ORDER NUMBER	P.O. NUMBER	DRAWING NUMBER
SHEET: 6 of 17	SCALE: AS NOTED			60132 D-2



## FLANGED TOP/BOTTOM INTERNAL MOUNT



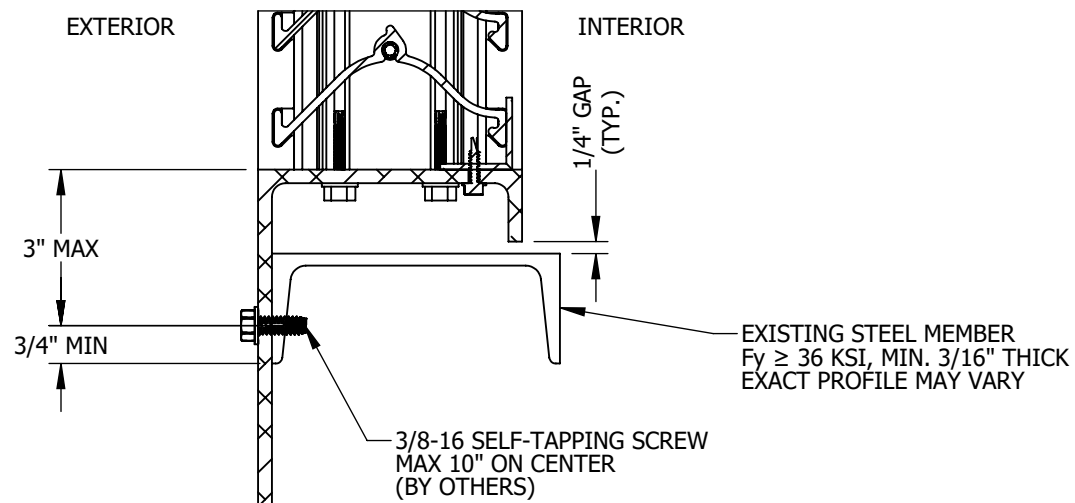
# INSTALLATION DETAIL 1 GROUT FILLED CMU SCALE: 3" = 1'-0" D-3 INTERNAL MOUNT

FLANGED BOTTOM DETAIL SHOWN  
TYPICAL FOR FLANGED TOP





INSTALLATION DETAIL  CONCRETE  
SCALE: 3" = 1'-0"  INTERNAL MOUNT

FLANGED BOTTOM DETAIL SHOWN  
TYPICAL FOR FLANGED TOP

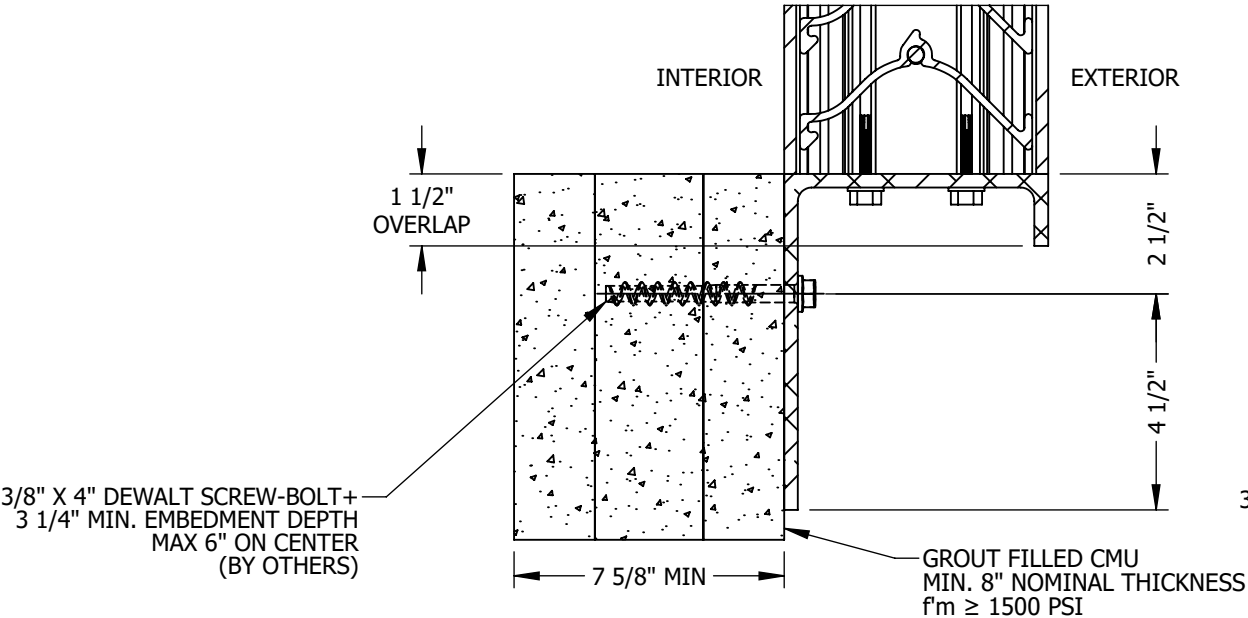


# INSTALLATION DETAIL 3 D-3 STRUCTURAL STEEL INTERNAL MOUNT

FLANGED BOTTOM DETAIL SHOWN  
TYPICAL FOR FLANGED TOP

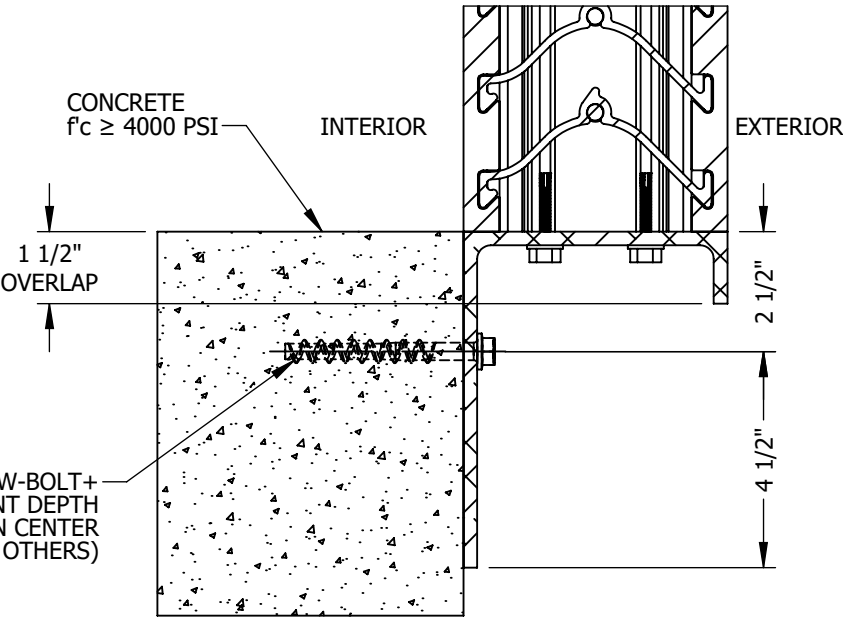
H	UPDATE DIMENSIONS SHEET D-8 (ECN 23-0089)	10/16/2023	MSM	UNLESS OTHERWISE SPECIFIED DIMENSION ARE IN INCHES.  TOLERANCE UNLESS NOTED: X.X      ±0.060 X.XX     ±0.030 X.XXX    ±0.010 ANGLE    ±1° FRACTION ±1/16  MAX HOLE BREAKOUT: 15% OF MATERIAL THICKNESS	5101 Blue Mound Road Fort Worth, Texas 76106 Phone: 817-509-2300 Fax: 817-831-3110	<div>ALL-LITE</div> <div>THIS DRAWING AND THE DESIGN REPRESENTED ARE THE CONFIDENTIAL AND PROPRIETARY PROPERTY OF PCI INDUSTRIES AND MAY NOT BE DISCLOSED, LOANED, COPIED, OR USED FOR ANY PURPOSE OTHER THAN DESIGN REVIEW AND APPROVAL WITHOUT THE EXPRESS WRITTEN CONSENT OF PCI INDUSTRIES.</div>	DRAWING DESCR: INSTALLATION DETAILS, FLANGED TOP/BOTTOM, INTERNAL MOUNT					
G	UPDATE NOTES (ECN 23-0041)	4/5/2023	MSM				PROJECT: XAV-545 FEMA 361/320 GRILLE ASSEMBLY & INSTALLATION DETAILS					
F	ECN 22-0105	1/30/2023	MSM				LOCATION:					
E	ECN 21-0020	3/11/2021	MRS				CUSTOMER:					
D	ECN 18-0054	9/21/2018	LGH / NWW				PROJ. MGR.: NATHAN WOODWORTH      DRAWN BY: LGH					
C	REVISED STATIC PRESSURE TABLE	4/4/2018	JG				DATE: 12/14/2017      CHK'D BY: JG/nww      ORDER NUMBER      P.O. NUMBER      DRAWING NUMBER					
REV. NO.	DESCRIPTION	DATE	DRAWN BY	<div><div></div><div></div></div>			SHEET: 7 of 17		SCALE: AS NOTED		60132 D-3	

FLANGED TOP/BOTTOM  
EXTERNAL MOUNT



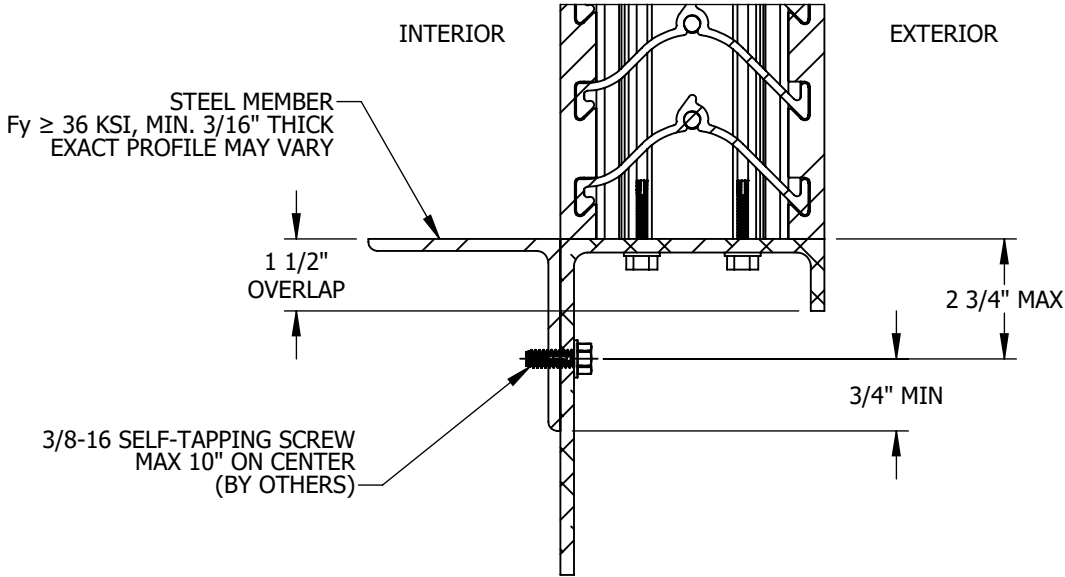
INSTALLATION DETAIL 1  
SCALE: 3" = 1'-0" D-4 GROUT FILLED CMU  
EXTERNAL MOUNT

FLANGED BOTTOM DETAIL SHOWN  
TYPICAL FOR FLANGED TOP



INSTALLATION DETAIL 2  
SCALE: 3" = 1'-0" D-4 CONCRETE  
EXTERNAL MOUNT

FLANGED BOTTOM DETAIL SHOWN  
TYPICAL FOR FLANGED TOP



INSTALLATION DETAIL 3  
SCALE: 3" = 1'-0" D-4 STRUCTURAL STEEL  
EXTERNAL MOUNT

FLANGED BOTTOM DETAIL SHOWN  
TYPICAL FOR FLANGED TOP

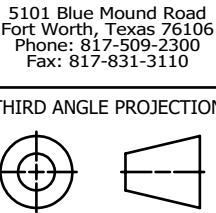
- NOTES:  
1. SEE SHEET D-11 FOR COMPREHENSIVE ANCHOR REQUIREMENT TABLE.  
2. MAX ANCHOR DISTANCE FROM ENDS OF FLANGE = 1/2 x SPACING BETWEEN ANCHORS

H	UPDATE DIMENSIONS SHEET D-8 (ECN 23-0089)	10/16/2023	MSM
G	UPDATE NOTES (ECN 23-0041)	4/5/2023	MSM
F	ECN 22-0105	1/30/2023	MSM
E	ECN 21-0020	3/11/2021	MRS
D	ECN 18-0054	9/21/2018	LGH / NWW
C	REVISED STATIC PRESSURE TABLE	4/4/2018	JG
REV. NO.	DESCRIPTION	DATE	DRAWN BY

UNLESS OTHERWISE SPECIFIED  
DIMENSION ARE IN INCHES.

TOLERANCE UNLESS NOTED:  
X.X ±0.060  
X.XX ±0.030  
X.XXX ±0.010  
ANGLE ±1°  
FRACTION ±1/16

MAX HOLE BREAKOUT:  
15% OF MATERIAL THICKNESS



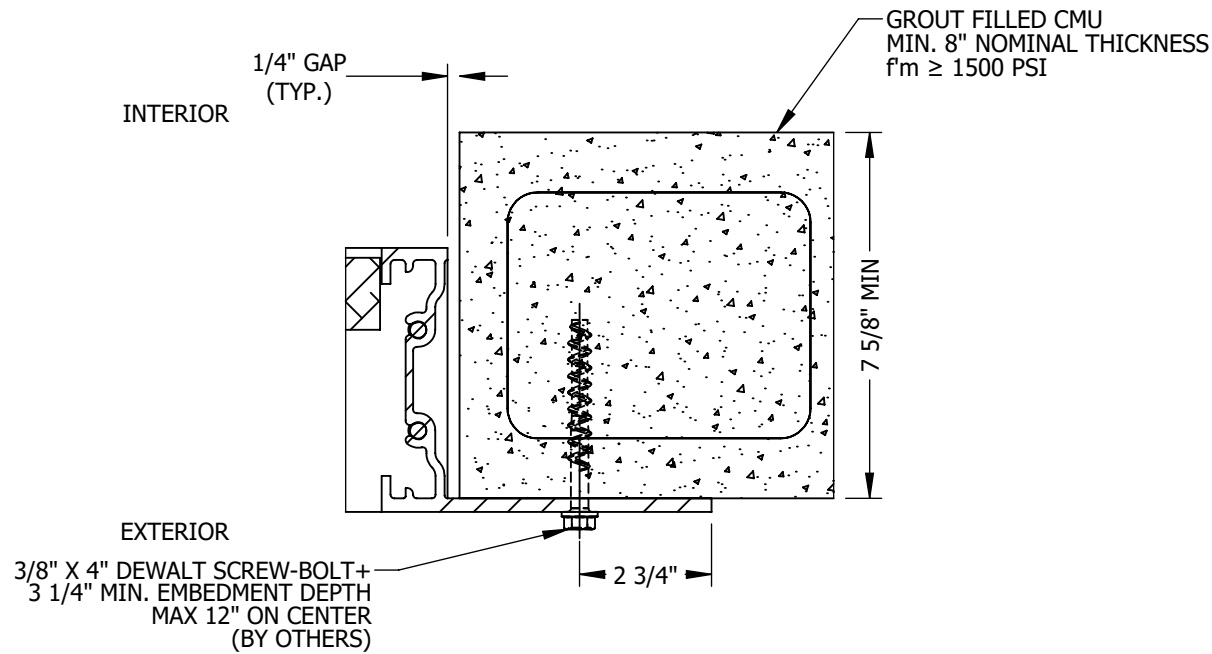
**ALL-LITE**

THIS DRAWING AND THE DESIGN REPRESENTED ARE  
THE CONFIDENTIAL AND PROPRIETARY PROPERTY OF  
PCI INDUSTRIES AND MAY NOT BE DISCLOSED, LOANED,  
COPIED, OR USED FOR ANY PURPOSE OTHER THAN  
DESIGN REVIEW AND APPROVAL WITHOUT THE  
EXPRESS WRITTEN CONSENT OF PCI INDUSTRIES.

DRAWING DESCR: INSTALLATION DETAILS, FLANGED TOP/BOTTOM, EXTERNAL MOUNT				
PROJECT: XAV-545 FEMA 361/320 GRILLE ASSEMBLY & INSTALLATION DETAILS				
LOCATION:				
CUSTOMER:				
PROJ. MGR.: NATHAN WOODWORTH		DRAWN BY: LGH		
DATE: 12/14/2017	CHK'D BY: JG/nww	ORDER NUMBER	P.O. NUMBER	DRAWING NUMBER
SHEET: 8 of 17	SCALE: AS NOTED			60132 D-4

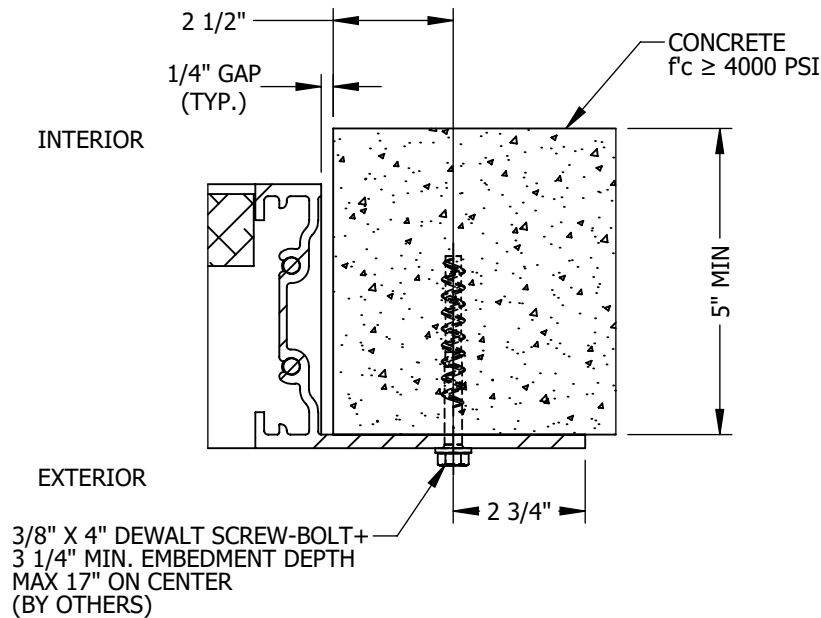


FLANGED JAMBS  
INTERNAL MOUNT



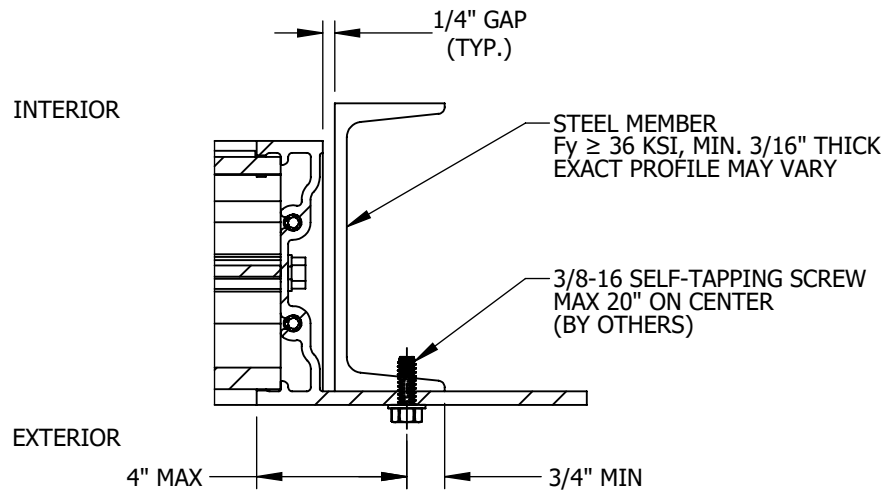
INSTALLATION DETAIL 1 GROUT FILLED CMU  
SCALE: 3" = 1'-0" D-5 INTERNAL MOUNT

TYPICAL BOTH JAMBS



INSTALLATION DETAIL 2 CONCRETE  
SCALE: 3" = 1'-0" D-5 INTERNAL MOUNT

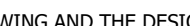
TYPICAL BOTH JAMBS



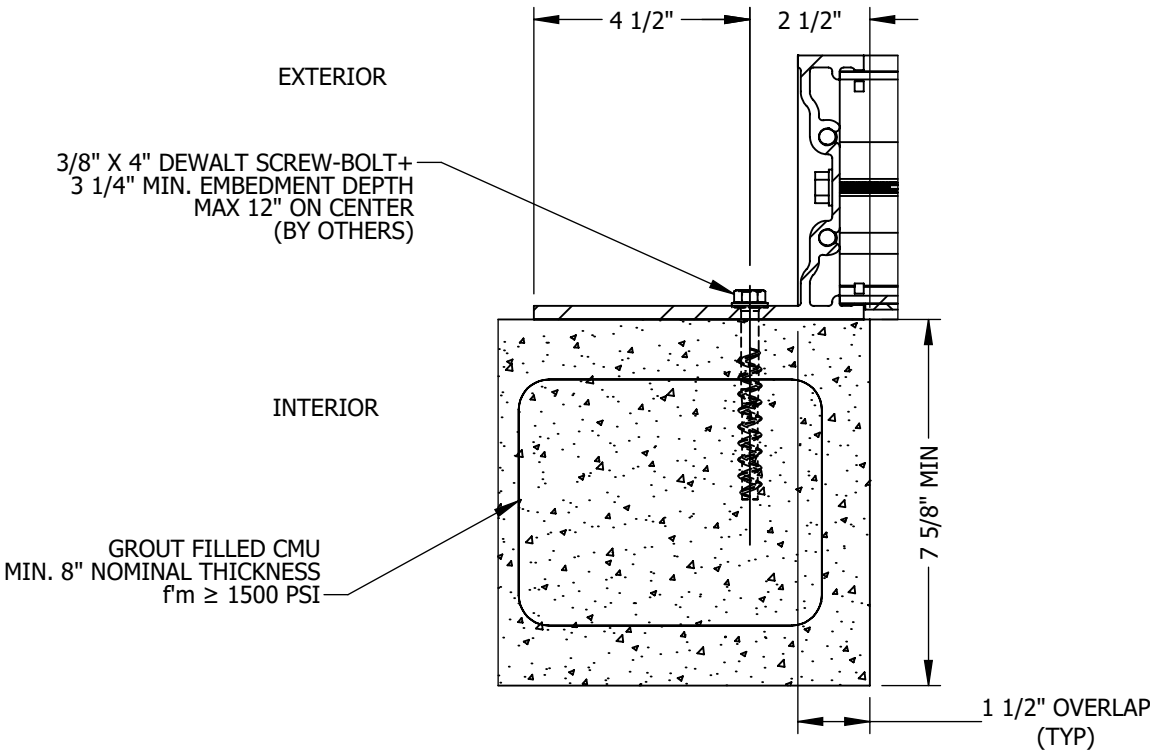
INSTALLATION DETAIL 3 STRUCTURAL STEEL  
SCALE: 3" = 1'-0" D-5 INTERNAL MOUNT

TYPICAL BOTH JAMBS

- NOTES:  
1. SEE SHEET D-11 FOR COMPREHENSIVE ANCHOR REQUIREMENT TABLE.  
2. MAX ANCHOR DISTANCE FROM ENDS OF FLANGE = 1/2 x SPACING BETWEEN ANCHORS

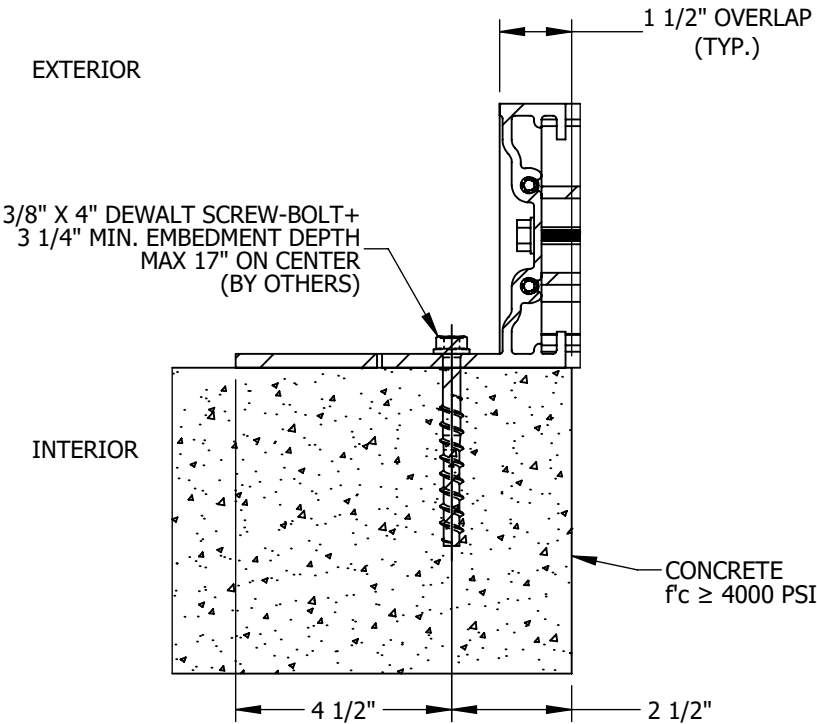
I:\Engineering Library\	H	UPDATE DIMENSIONS SHEET D-8 (ECN 23-0089)	10/16/2023	MSM	UNLESS OTHERWISE SPECIFIED DIMENSION ARE IN INCHES.  TOLERANCE UNLESS NOTED: X.X ±0.060 X.XX ±0.030 X.XXX ±0.010 ANGLE ±1° FRACTION ±1/16  MAX HOLE BREAKOUT: 15% OF MATERIAL THICKNESS	5101 Blue Mound Road Fort Worth, Texas 76106 Phone: 817-509-2300 Fax: 817-831-3110	THIRD ANGLE PROJECTION 	<h1>ALL-LITE</h1> <p>THIS DRAWING AND THE DESIGN REPRESENTED ARE THE CONFIDENTIAL AND PROPRIETARY PROPERTY OF PCI INDUSTRIES AND MAY NOT BE DISCLOSED, LOANED, COPIED, OR USED FOR ANY PURPOSE OTHER THAN DESIGN REVIEW AND APPROVAL WITHOUT THE EXPRESS WRITTEN CONSENT OF PCI INDUSTRIES.</p>	DRAWING DESCR: INSTALLATION DETAILS, FLANGED JAMBS, INTERNAL MOUNT				
	G	UPDATE NOTES (ECN 23-0041)	4/5/2023	MSM					PROJECT: XAV-545 FEMA 361/320 GRILLE ASSEMBLY & INSTALLATION DETAILS				
	F	ECN 22-0105	1/30/2023	MSM					LOCATION:				
	E	ECN 21-0020	3/11/2021	MRS					CUSTOMER:				
	D	ECN 18-0054	9/21/2018	LGH / NWW					PROJ. MGR.: NATHAN WOODWORTH    DRAWN BY: LGH				
	C	REVISED STATIC PRESSURE TABLE	4/4/2018	JG					DATE: 12/14/2017	CHK'D BY: JG/nww	ORDER NUMBER	P.O. NUMBER	DRAWING NUMBER
	REV. NO.	DESCRIPTION	DATE	DRAWN BY					SHEET: 9 of 17	SCALE: AS NOTED			60132 D-5

FLANGED JAMBS  
EXTERNAL MOUNT



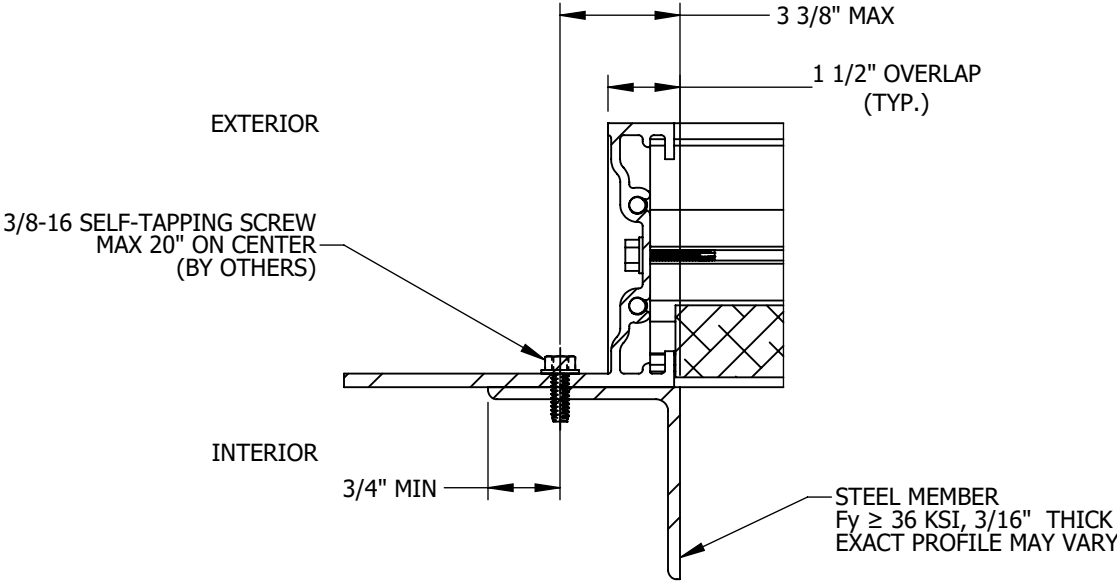
INSTALLATION DETAIL 1 GROUT FILLED CMU  
SCALE: 3" = 1'-0" D-6 EXTERNAL MOUNT

TYPICAL BOTH JAMBS



INSTALLATION DETAIL 2 CONCRETE  
SCALE: 3" = 1'-0" D-6 EXTERNAL MOUNT

TYPICAL BOTH JAMBS



INSTALLATION DETAIL 3 STRUCTURAL STEEL  
SCALE: 3" = 1'-0" D-6 EXTERNAL MOUNT

TYPICAL BOTH JAMBS

- NOTES:  
1. SEE SHEET D-11 FOR COMPREHENSIVE ANCHOR REQUIREMENT TABLE.  
2. MAX ANCHOR DISTANCE FROM ENDS OF FLANGE = 1/2 x SPACING BETWEEN ANCHORS

H	UPDATE DIMENSIONS SHEET D-8 (ECN 23-0089)	10/16/2023	MSM
G	UPDATE NOTES (ECN 23-0041)	4/5/2023	MSM
F	ECN 22-0105	1/30/2023	MSM
E	ECN 21-0020	3/11/2021	MRS
D	ECN 18-0054	9/21/2018	LGH / NWW
C	REVISED STATIC PRESSURE TABLE	4/4/2018	JG
REV. NO.	DESCRIPTION	DATE	DRAWN BY

UNLESS OTHERWISE SPECIFIED DIMENSION ARE IN INCHES.		
TOLERANCE UNLESS NOTED:		
X.X	±0.060	
X.XX	±0.030	
X.XXX	±0.010	
ANGLE	±1°	
FRACTION	±1/16	
MAX HOLE BREAKOUT: 15% OF MATERIAL THICKNESS		

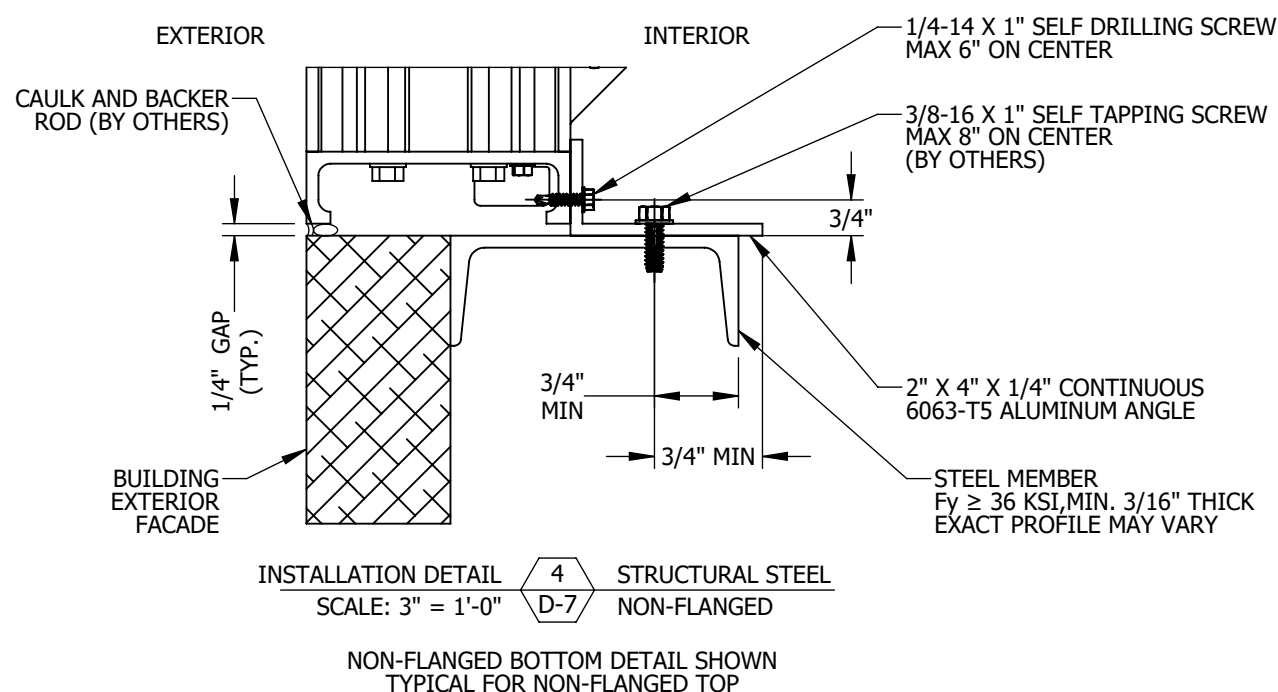
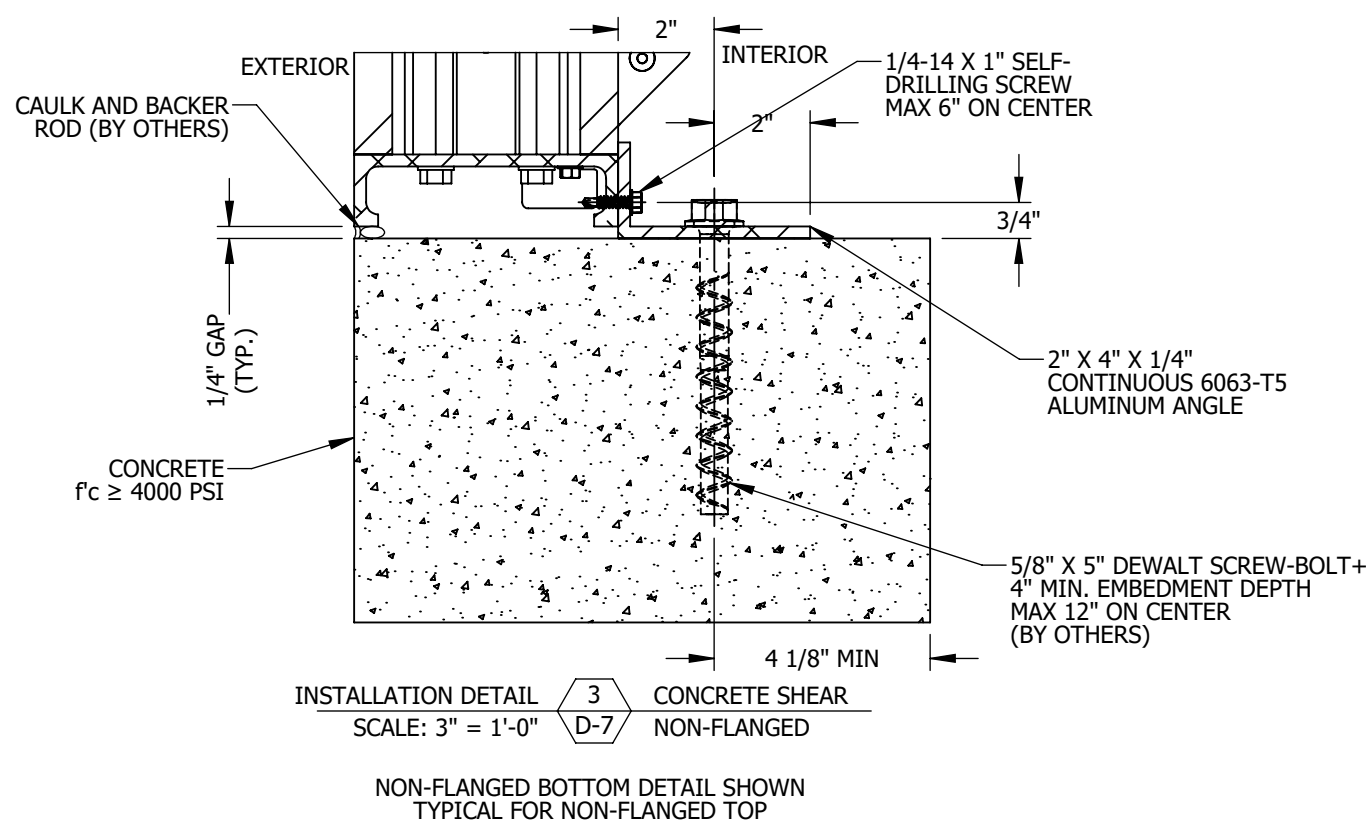
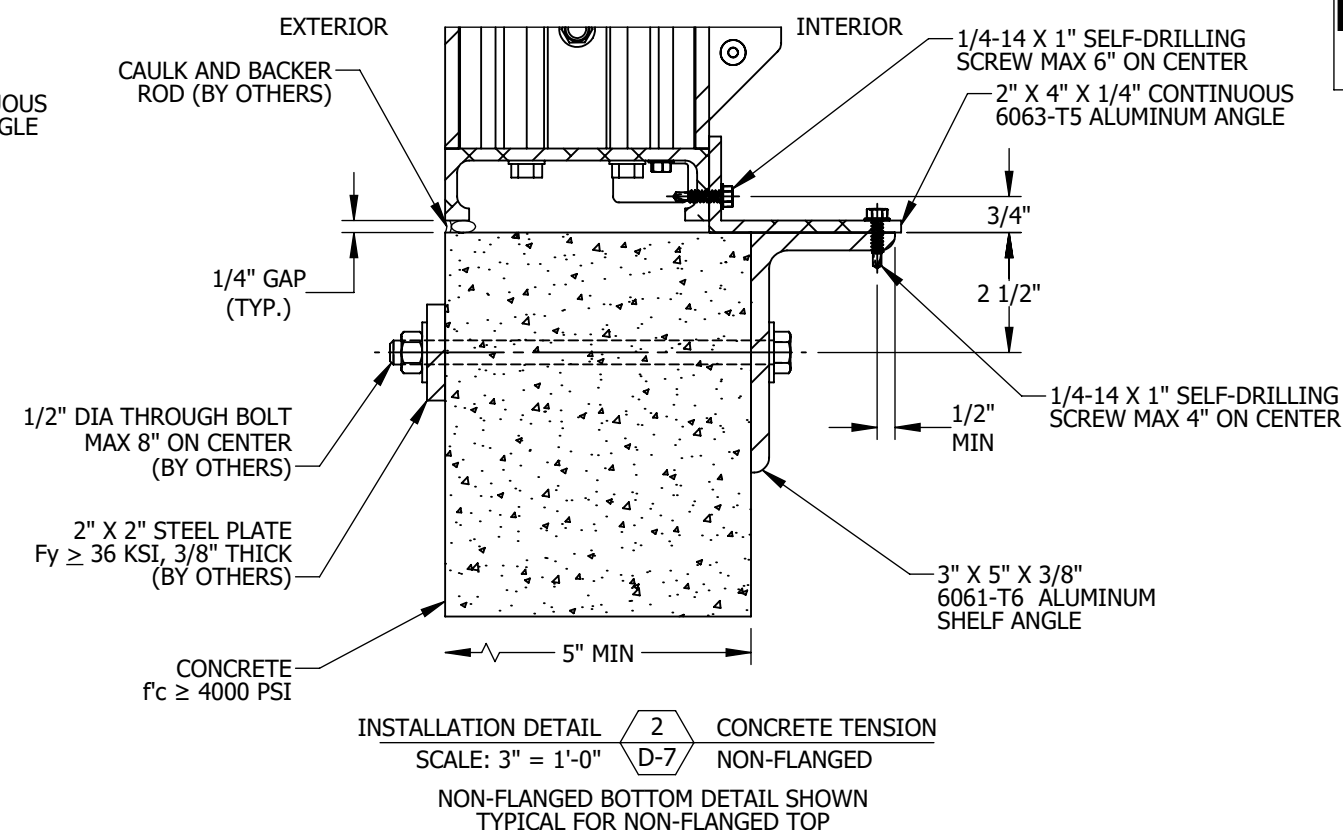
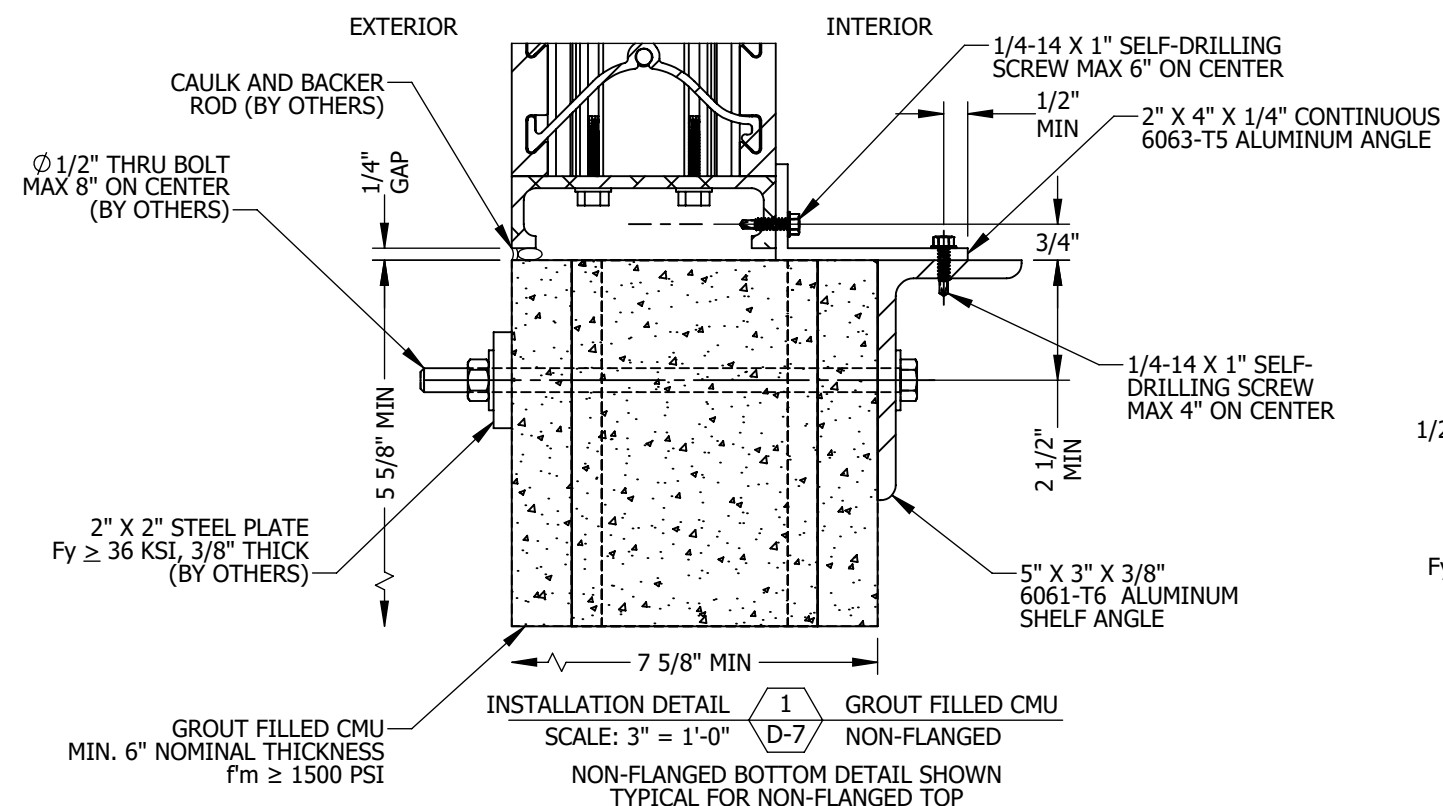
5101 Blue Mound Road Fort Worth, Texas 76106 Phone: 817-509-2300 Fax: 817-831-3110	
THIRD ANGLE PROJECTION	

ALL-LITE

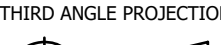
THIS DRAWING AND THE DESIGN REPRESENTED ARE THE CONFIDENTIAL AND PROPRIETARY PROPERTY OF PCI INDUSTRIES AND MAY NOT BE DISCLOSED, LOANED, COPIED, OR USED FOR ANY PURPOSE OTHER THAN DESIGN REVIEW AND APPROVAL WITHOUT THE EXPRESS WRITTEN CONSENT OF PCI INDUSTRIES.

DRAWING DESCR: INSTALLATION DETAILS, FLANGED JAMBS, EXTERNAL MOUNT				
PROJECT: XAV-545 FEMA 361/320 GRILLE ASSEMBLY & INSTALLATION DETAILS				
LOCATION:				
CUSTOMER:				
PROJ. MGR.: NATHAN WOODWORTH			DRAWN BY: LGH	
DATE: 12/14/2017	CHK'D BY: JG/nww		ORDER NUMBER	P.O. NUMBER
SHEET: 10 of 17	SCALE: AS NOTED			DRAWING NUMBER
			60132 D-6	

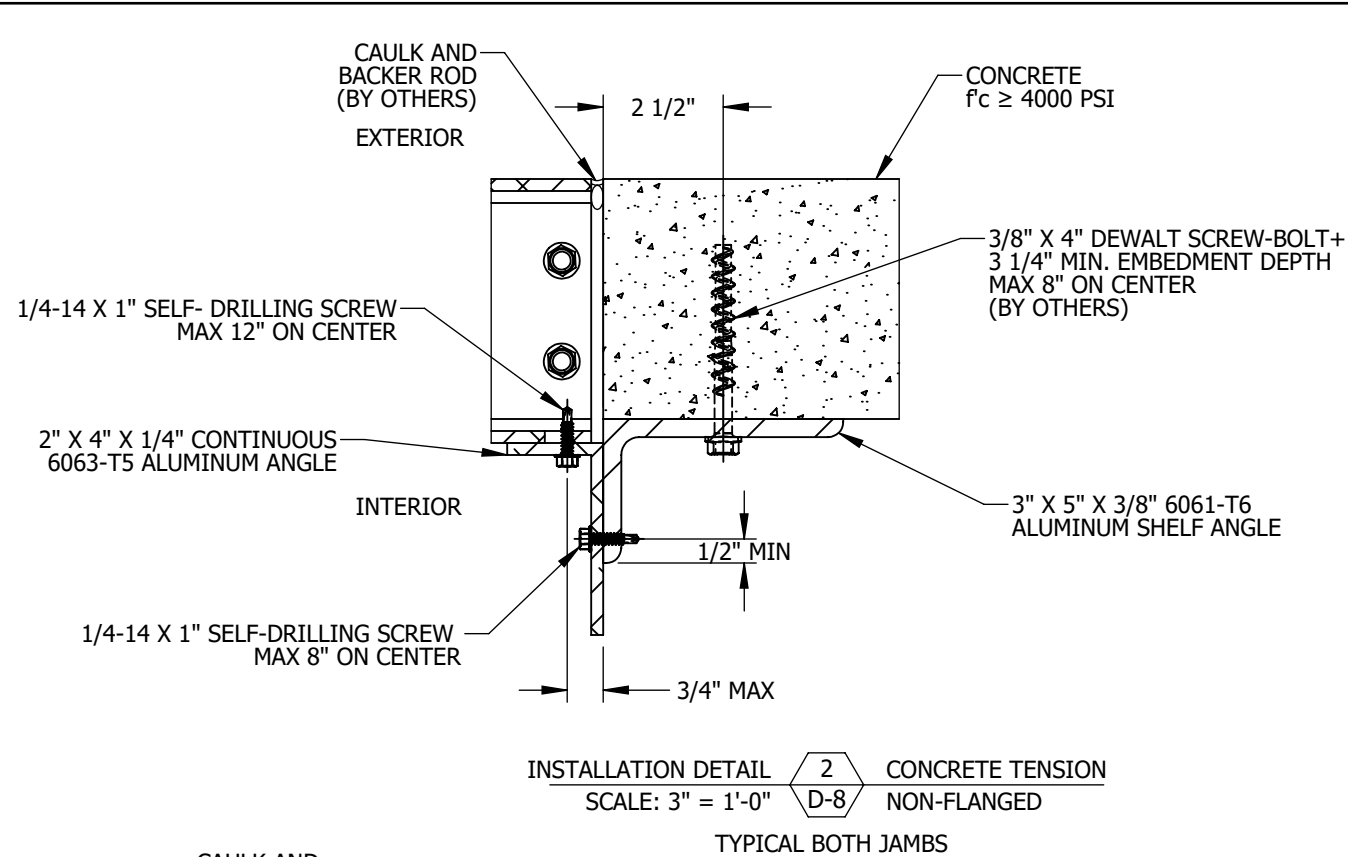
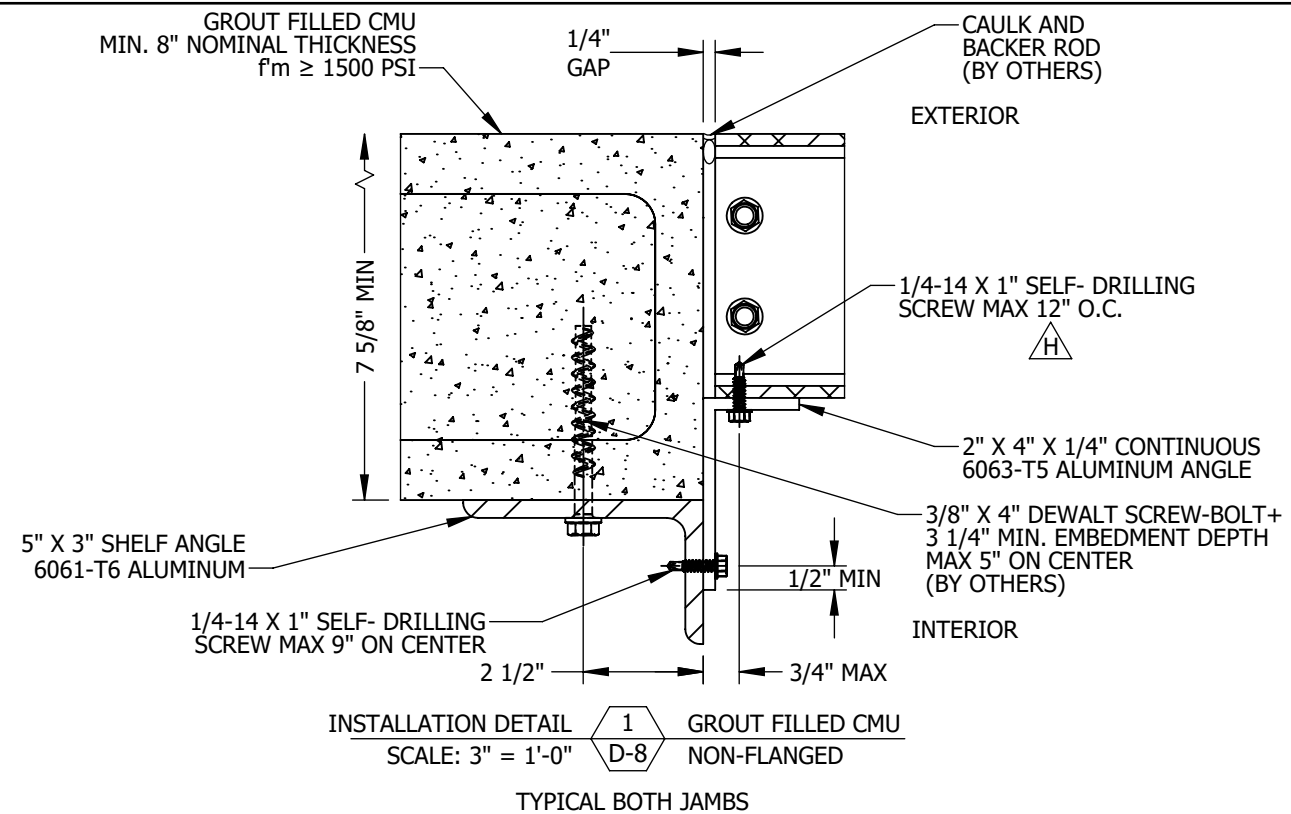
## NON-FLANGED TOP/BOTTOM



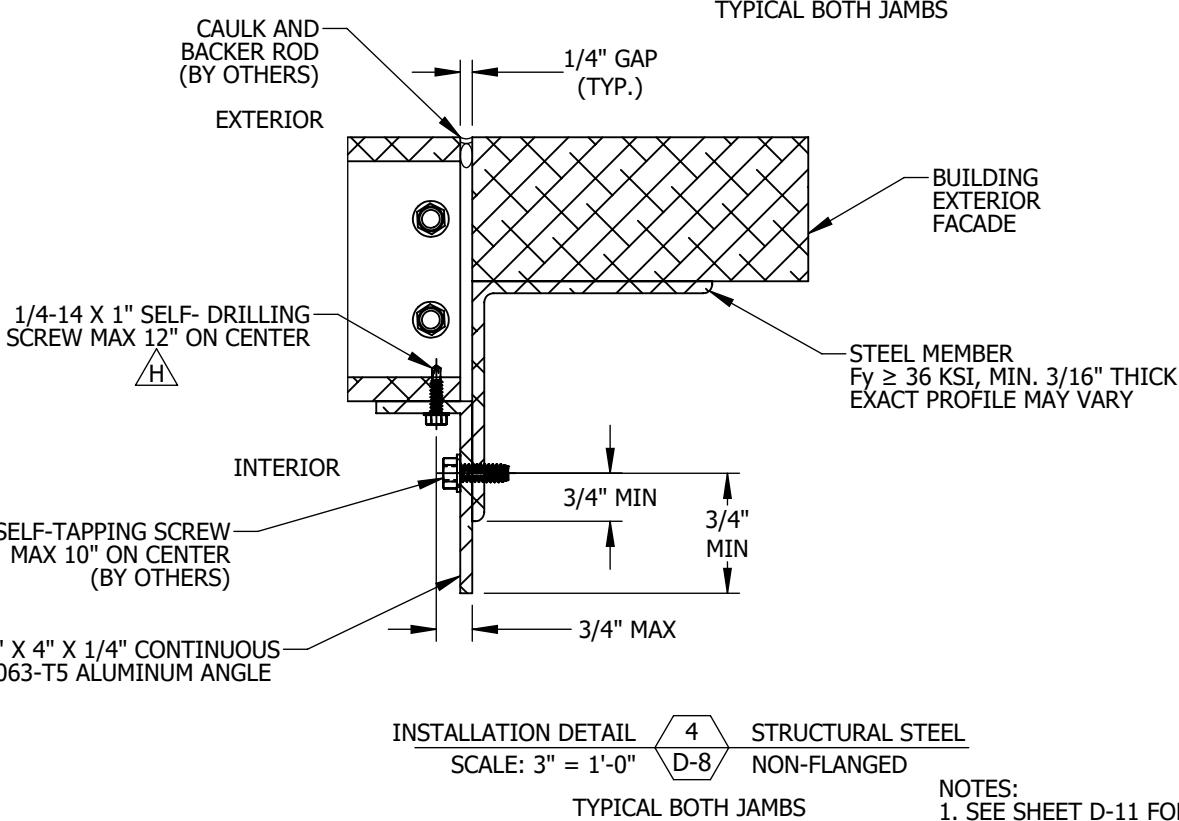
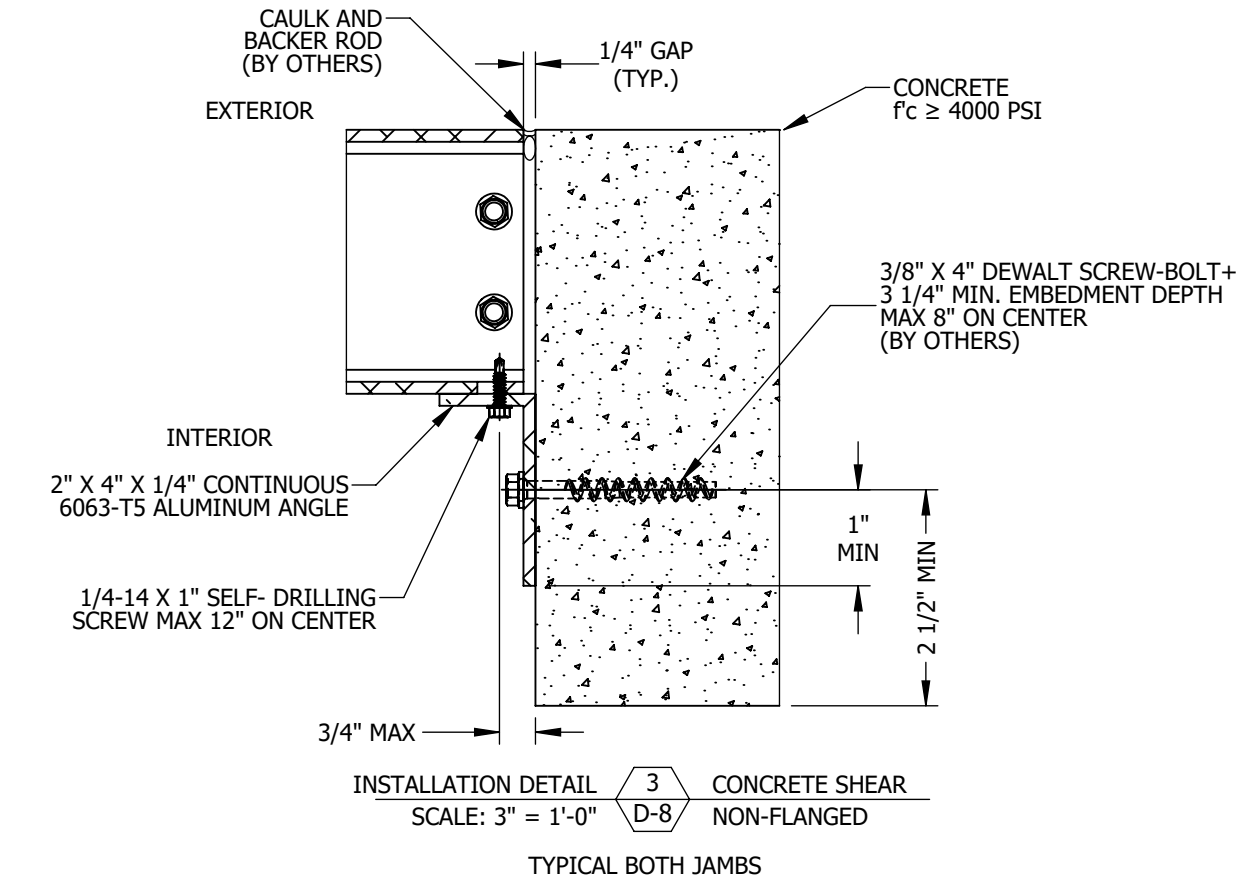
NOTES:  
1. SEE SHEET D-11 FOR COMPREHENSIVE ANCHOR REQUIREMENT TABLE.  
2. MAX ANCHOR DISTANCE FROM ENDS OF FLANGE =  $1/2 \times$  SPACING BETWEEN ANCHORS

H	UPDATE DIMENSIONS SHEET D-8 (ECN 23-0089)	10/16/2023	MSM	<div>UNLESS OTHERWISE SPECIFIED DIMENSION ARE IN INCHES.</div> <div>TOLERANCE UNLESS NOTED: X.X ±0.060 X.XX ±0.030 X.XXX ±0.010 ANGLE ±1° FRACTION ±1/16</div> <div>MAX HOLE BREAKOUT: 15% OF MATERIAL THICKNESS</div>	<div>5101 Blue Mound Road Fort Worth, Texas 76106 Phone: 817-509-2300 Fax: 817-831-3110</div> <div>THIRD ANGLE PROJECTION</div> <div></div>	<div>ALL-LITE</div> <div>THIS DRAWING AND THE DESIGN REPRESENTED ARE THE CONFIDENTIAL AND PROPRIETARY PROPERTY OF PCI INDUSTRIES AND MAY NOT BE DISCLOSED, LOANED, COPIED, OR USED FOR ANY PURPOSE OTHER THAN DESIGN REVIEW AND APPROVAL WITHOUT THE EXPRESS WRITTEN CONSENT OF PCI INDUSTRIES.</div>	DRAWING DESC: INSTALLATION DETAILS, NON-FLANGED TOP/BOTTOM				
G	UPDATE NOTES (ECN 23-0041)	4/5/2023	MSM				PROJECT: XAV-545 FEMA 361/320 GRILLE ASSEMBLY & INSTALLATION DETAILS				
F	ECN 22-0105	1/30/2023	MSM				LOCATION:				
E	ECN 21-0020	3/11/2021	MRS				CUSTOMER:				
D	ECN 18-0054	9/21/2018	LGH / NWWW				PROJ. MGR.: NATHAN WOODWORTH		DRAWN BY: LGH		
C	REVISED STATIC PRESSURE TABLE	4/4/2018	JG				DATE: 12/14/2017	CHK'D BY: JG/nwww	ORDER NUMBER	P.O. NUMBER	DRAWING NUMBER
REV. NO.	DESCRIPTION	DATE	DRAWN BY	SHEET: 11 of 17					SCALE: AS NOTED	60132 D-7	

I:\Engineering Library\ECN-EIN\2023\ECN 23-0089 - XAV-545 Installation Dwg Update\Models\



# NON-FLANGED JAMBS



NOTES:  
1. SEE SHEET D-11 FOR COMPREHENSIVE ANCHOR REQUIREMENT TABLE.  
2. MAX ANCHOR DISTANCE FROM ENDS OF FLANGE = 1/2 x SPACING BETWEEN ANCHORS

H	UPDATE DIMENSIONS SHEET D-8 (ECN 23-0089)	10/16/2023	MSM
G	UPDATE NOTES (ECN 23-0041)	4/5/2023	MSM
F	ECN 22-0105	1/30/2023	MSM
E	ECN 21-0020	3/11/2021	MRS
D	ECN 18-0054	9/21/2018	LGH / NWW
C	REVISED STATIC PRESSURE TABLE	4/4/2018	JG
REV. NO.	DESCRIPTION	DATE	DRAWN BY

UNLESS OTHERWISE SPECIFIED  
DIMENSION ARE IN INCHES.

TOLERANCE UNLESS NOTED:  
X.X ±0.060  
X.XX ±0.030  
X.XXX ±0.010  
ANGLE ±1°  
FRACTION ±1/16

MAX HOLE BREAKOUT:  
15% OF MATERIAL THICKNESS

5101 Blue Mound Road  
Fort Worth, Texas 76106  
Phone: 817-509-2300  
Fax: 817-831-3110

THIRD ANGLE PROJECTION

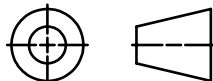
## ALL-LITE

THIS DRAWING AND THE DESIGN REPRESENTED ARE THE CONFIDENTIAL AND PROPRIETARY PROPERTY OF PCI INDUSTRIES AND MAY NOT BE DISCLOSED, LOANED, COPIED, OR USED FOR ANY PURPOSE OTHER THAN DESIGN REVIEW AND APPROVAL WITHOUT THE EXPRESS WRITTEN CONSENT OF PCI INDUSTRIES.

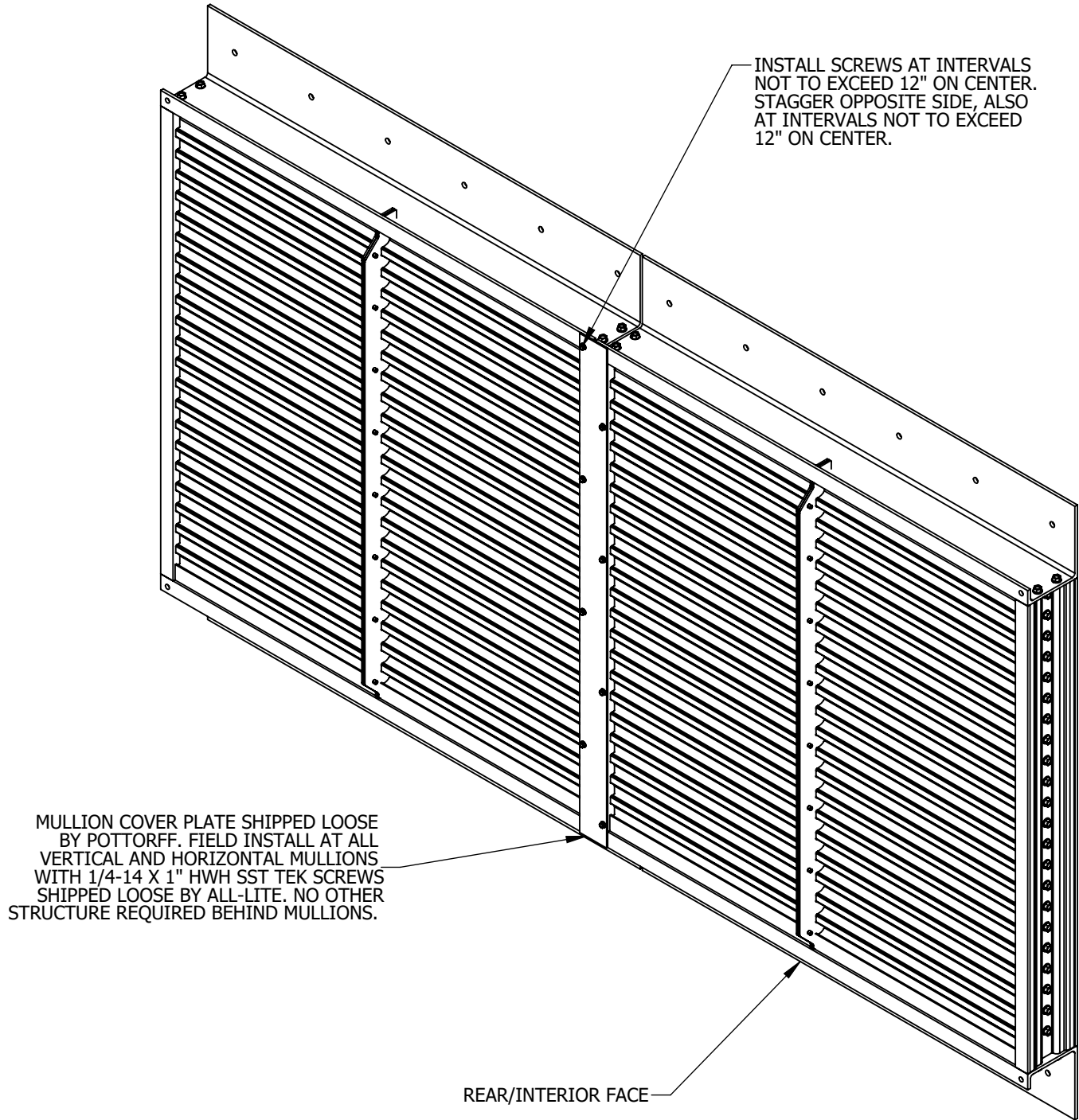
DRAWING DESCR: INSTALLATION DETAILS, NON-FLANGED JAMBS				
PROJECT: XAV-545 FEMA 361/320 GRILLE ASSEMBLY & INSTALLATION DETAILS				
LOCATION:				
CUSTOMER:				
PROJ. MGR.: NATHAN WOODWORTH		DRAWN BY: LGH		
DATE: 12/14/2017	CHK'D BY: JG/nww	ORDER NUMBER	P.O. NUMBER	DRAWING NUMBER
SHEET: 12 of 17	SCALE: AS NOTED			60132 D-8

I:\Engineering Library\ECN-EIN\2023\ECN 23-0089 - XAV-545 Installation Dwg Update\Models\

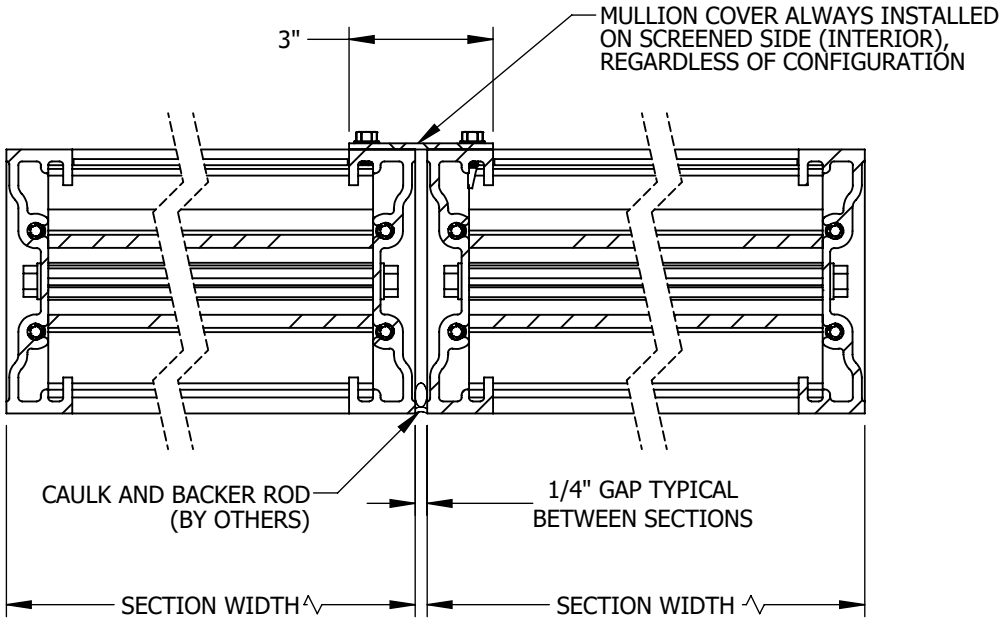
THIS PAGE LEFT BLANK

H	UPDATE DIMENSIONS SHEET D-8 (ECN 23-0089)	10/16/2023	MSM	UNLESS OTHERWISE SPECIFIED DIMENSION ARE IN INCHES.  TOLERANCE UNLESS NOTED: X.X ±0.060 X.XX ±0.030 X.XXX ±0.010 ANGLE ±1° FRACTION ±1/16  MAX HOLE BREAKOUT: 15% OF MATERIAL THICKNESS	5101 Blue Mound Road Fort Worth, Texas 76106 Phone: 817-509-2300 Fax: 817-831-3110	THIRD ANGLE PROJECTION 	<b>ALL-LITE</b>  THIS DRAWING AND THE DESIGN REPRESENTED ARE THE CONFIDENTIAL AND PROPRIETARY PROPERTY OF PCI INDUSTRIES AND MAY NOT BE DISCLOSED, LOANED, COPIED, OR USED FOR ANY PURPOSE OTHER THAN DESIGN REVIEW AND APPROVAL WITHOUT THE EXPRESS WRITTEN CONSENT OF PCI INDUSTRIES.	DRAWING DESCR: SCREEN INSTALLATION DETAILS				
G	UPDATE NOTES (ECN 23-0041)	4/5/2023	MSM					PROJECT: XAV-545 FEMA 361/320 GRILLE ASSEMBLY & INSTALLATION DETAILS				
F	ECN 22-0105	1/30/2023	MSM					LOCATION:				
E	ECN 21-0020	3/11/2021	MRS					CUSTOMER:				
D	ECN 18-0054	9/21/2018	LGH / NWW					PROJ. MGR.: NATHAN WOODWORTH    DRAWN BY: LGH				
C	REVISED STATIC PRESSURE TABLE	4/4/2018	JG					DATE: 12/14/2017	CHK'D BY: JG/nww	ORDER NUMBER	P.O. NUMBER	DRAWING NUMBER
REV. NO.	DESCRIPTION	DATE	DRAWN BY					SHEET: 13 of 17	SCALE: 1"=1'-0"			60132 D-9

MULLION COVER  
INSTALLATION



MULTI-SECTION ASSEMBLY  
TOP/BOTTOM FLANGE INTERNAL MOUNT SHOWN  
ALL OTHER CONFIGURATIONS SIMILAR



SECTION VIEW C MULLION INSTALLATION  
1-1/2" = 1'-0" D-10 E-2

HORIZONTAL SECTION SHOWN  
VERTICAL SECTION SIMILAR

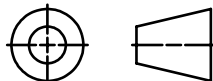
H	UPDATE DIMENSIONS SHEET D-8 (ECN 23-0089)	10/16/2023	MSM	UNLESS OTHERWISE SPECIFIED DIMENSION ARE IN INCHES.  TOLERANCE UNLESS NOTED: X.X ±0.060 X.XX ±0.030 X.XXX ±0.010 ANGLE ±1° FRACTION ±1/16  MAX HOLE BREAKOUT: 15% OF MATERIAL THICKNESS	5101 Blue Mound Road Fort Worth, Texas 76106 Phone: 817-509-2300 Fax: 817-831-3110	<div>ALL-LITE</div> <div>THIS DRAWING AND THE DESIGN REPRESENTED ARE THE CONFIDENTIAL AND PROPRIETARY PROPERTY OF PCI INDUSTRIES AND MAY NOT BE DISCLOSED, LOANED, COPIED, OR USED FOR ANY PURPOSE OTHER THAN DESIGN REVIEW AND APPROVAL WITHOUT THE EXPRESS WRITTEN CONSENT OF PCI INDUSTRIES.</div>	DRAWING DESCR: MULLION COVER INSTALLATION DETAILS				
G	UPDATE NOTES (ECN 23-0041)	4/5/2023	MSM				PROJECT: XAV-545 FEMA 361/320 GRILLE ASSEMBLY & INSTALLATION DETAILS				
F	ECN 22-0105	1/30/2023	MSM				LOCATION:				
E	ECN 21-0020	3/11/2021	MRS				CUSTOMER:				
D	ECN 18-0054	9/21/2018	LGH / NWW				PROJ. MGR.: NATHAN WOODWORTH      DRAWN BY: LGH				
C	REVISED STATIC PRESSURE TABLE	4/4/2018	JG	<div>THIRD ANGLE PROJECTION</div> <div></div>			DATE: 12/14/2017	CHK'D BY: JG/nww	ORDER NUMBER	P.O. NUMBER	DRAWING NUMBER
REV. NO.	DESCRIPTION	DATE	DRAWN BY				SHEET: 14 of 17	SCALE: 1"=10"			60132 D-10

I:\Engineering Library\ECN-EIN\2023\ECN 23-0089 - XAV-545 Installation Dwg Update\Models\

ANCHOR REQUIREMENTS

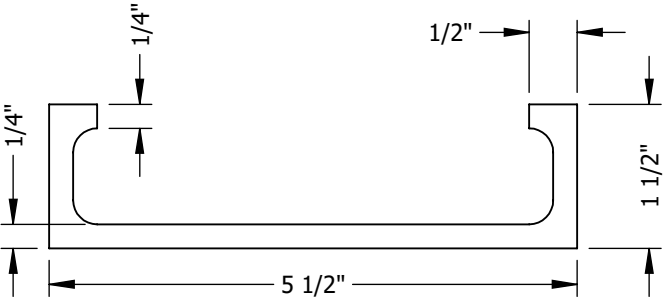
TABLE 3: XAV-545 ANCHOR REQUIREMENTS						
ATTACHMENT METHOD	ATTACHMENT LOCATION	BUILDING SUBSTRATE	ANCHOR TYPE	MIN EDGE DISTANCE	MAX SPACING	MIN EMBEDMENT DEPTH
FLANGE-MOUNTED (INTERNAL OR EXTERNAL MOUNT)	JAMBS	GROUT-FILLED CMU ( $f'm \geq 1500$ PSI)	3/8" X 4" DEWALT SCREW-BOLT+	2 1/2"	12"	3 1/4"
		CONCRETE ( $f'c \geq 4000$ PSI CRACKED)	3/8" X 4" DEWALT SCREW-BOLT+	2 1/2"	17"	3 1/4"
		STEEL (MIN 3/16" THICK, $F_y \geq 36$ KSI)	3/8" SELF-TAPPING SCREW, GR. 5 STEEL	3/4"	20"	3/16"
	TOP & BOTTOM	GROUT-FILLED CMU ( $f'm \geq 1500$ PSI)	3/8" X 4" DEWALT SCREW-BOLT+	2 1/2"	6"	3 1/4"
		CONCRETE ( $f'c \geq 4000$ PSI CRACKED)	3/8" X 4" DEWALT SCREW-BOLT+	2 1/2"	10"	3 1/4"
		STEEL (MIN 3/16" THICK, $F_y \geq 36$ KSI)	3/8" SELF-TAPPING, GR. 5 STEEL	3/4"	10"	3/16"
CONTINUOUS ANGLES (NON-FLANGED, INTERNAL MOUNT ONLY)	JAMBS SHELF ANGLE ANCHORS	GROUT-FILLED CMU ( $f'm \geq 1500$ PSI)	3/8" X 4" DEWALT SCREW-BOLT+	2 1/2"	5"	3 1/4"
		CONCRETE ( $f'c \geq 4000$ PSI, CRACKED)	3/8" X 4" DEWALT SCREW-BOLT+	2 1/2"	8"	3 1/4"
	JAMBS CONT. ANGLE ANCHORS	CONCRETE ( $f'c \geq 4000$ PSI, CRACKED)	3/8" X 4" DEWALT SCREW-BOLT+	2 1/2"	8"	3 1/4"
		STEEL (MIN 3/16" THICK, $F_y \geq 36$ KSI)	3/8" SELF-TAPPING, GR. 5 STEEL	3/4"	12"	3/16"
	TOP & BOTTOM SHELF ANGLE ANCHORS	GROUT-FILLED CMU ( $f'm \geq 1500$ PSI)	1/2" THROUGH-BOLT W/ NUT & BEARING PLATE	2 1/2"	8"	FULL
		CONCRETE ( $f'c \geq 4000$ PSI, CRACKED)	1/2" THROUGH-BOLT W/ NUT & BEARING PLATE	2 1/2"	8"	FULL
	TOP & BOTTOM CONT. ANGLE ANCHORS	CONCRETE ( $f'c \geq 4000$ PSI CRACKED)	5/8" X 5" DEWALT SCREW-BOLT+	4 1/8"	12"	4"
		STEEL (MIN 3/16" THICK, $F_y \geq 36$ KSI)	3/8" SELF-TAPPING SCREW, GR. 5 STEEL	3/4"	8"	3/16"

\*NOTE: IT IS ACCEPTABLE TO SUBSTITUTE 3/8-16 BOLTS, NUTS, AND FLAT WASHERS INSTEAD OF 3/8" SELF-TAPPING SCREWS.

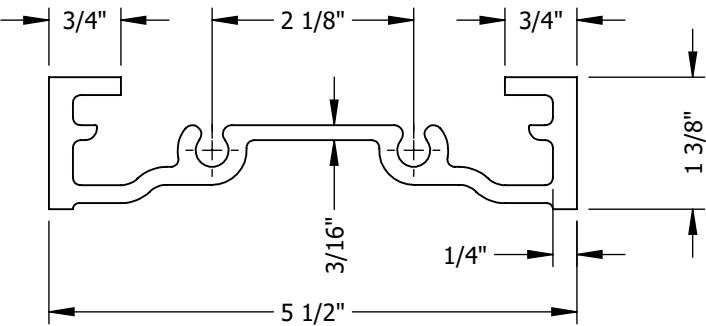
H	UPDATE DIMENSIONS SHEET D-8 (ECN 23-0089)	10/16/2023	MSM	UNLESS OTHERWISE SPECIFIED DIMENSION ARE IN INCHES.  TOLERANCE UNLESS NOTED: X.X ±0.060 X.XX ±0.030 X.XXX ±0.010 ANGLE ±1° FRACTION ±1/16  MAX HOLE BREAKOUT: 15% OF MATERIAL THICKNESS	5101 Blue Mound Road Fort Worth, Texas 76106 Phone: 817-509-2300 Fax: 817-831-3110	<div>THIRD ANGLE PROJECTION</div> <div></div> <div>ALL-LITE</div> <div>THIS DRAWING AND THE DESIGN REPRESENTED ARE THE CONFIDENTIAL AND PROPRIETARY PROPERTY OF PCI INDUSTRIES AND MAY NOT BE DISCLOSED, LOANED, COPIED, OR USED FOR ANY PURPOSE OTHER THAN DESIGN REVIEW AND APPROVAL WITHOUT THE EXPRESS WRITTEN CONSENT OF PCI INDUSTRIES.</div>	DRAWING DESCR: ANCHOR REQUIREMENTS				
G	UPDATE NOTES (ECN 23-0041)	4/5/2023	MSM				PROJECT: XAV-545 FEMA 361/320 GRILLE ASSEMBLY & INSTALLATION DETAILS				
F	ECN 22-0105	1/30/2023	MSM				LOCATION:				
E	ECN 21-0020	3/11/2021	MRS				CUSTOMER:				
D	ECN 18-0054	9/21/2018	LGH / NWW				PROJ. MGR.: NATHAN WOODWORTH    DRAWN BY: LGH				
C	REVISED STATIC PRESSURE TABLE	4/4/2018	JG				DATE: 12/14/2017	CHK'D BY: JG/nww	ORDER NUMBER	P.O. NUMBER	DRAWING NUMBER
REV. NO.	DESCRIPTION	DATE	DRAWN BY				SHEET: 15 of 17	SCALE: NONE			60132 D-11

I:\Engineering Library\ECN-EIN\2023\ECN 23-0089 - XAV-545 Installation Dwg Update\Models\

DESCRIPTION: NON-FLANGED HEAD/SILL EXTRUSION  
MATERIAL: 6005A-T61 ALUMINUM  
ALL-LITE PART NO: 59976  
SCALE: 6" = 1'-0"

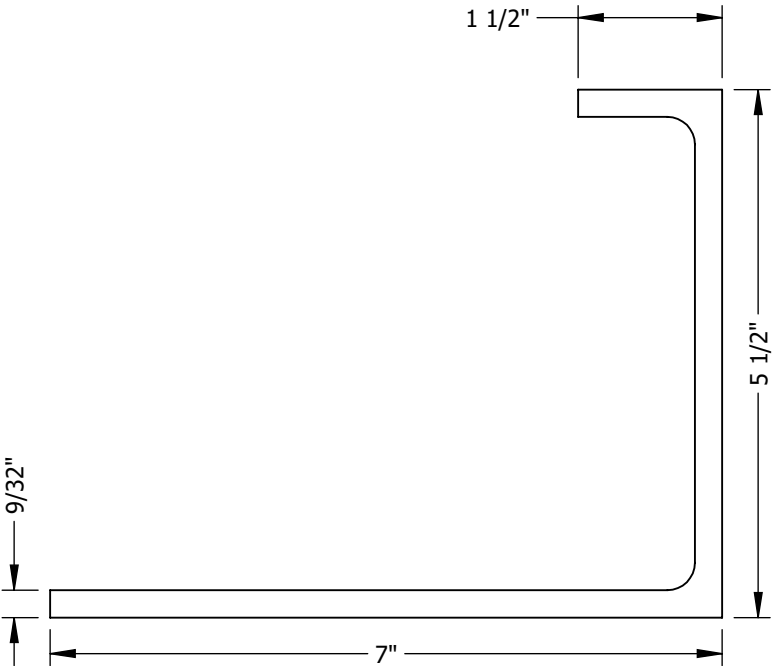


DESCRIPTION: NON-FLANGED JAMB EXTRUSION  
MATERIAL: 6005A-T61 ALUMINUM  
ALL-LITE PART NO: 70240  
SCALE: 6" = 1'-0"

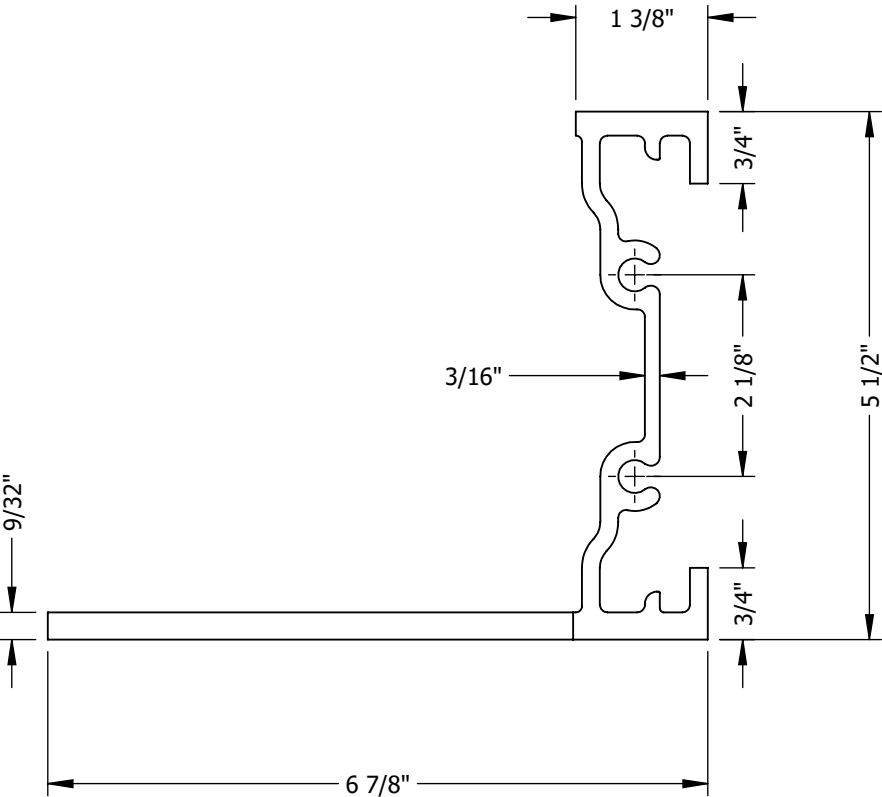


EXTRUDED PART  
DETAILS

DESCRIPTION: FLANGED HEAD/SILL EXTRUSION  
MATERIAL: 6005A-T61 ALUMINUM  
ALL-LITE PART NO: 59977  
SCALE: 6" = 1'-0"



DESCRIPTION: FLANGED JAMB EXTRUSION  
MATERIAL: 6005A-T61 ALUMINUM  
ALL-LITE PART NO: 70241  
SCALE: 6" = 1'-0"



H	UPDATE DIMENSIONS SHEET D-8 (ECN 23-0089)	10/16/2023	MSM
G	UPDATE NOTES (ECN 23-0041)	4/5/2023	MSM
F	ECN 22-0105	1/30/2023	MSM
E	ECN 21-0020	3/11/2021	MRS
D	ECN 18-0054	9/21/2018	LGH / NWW
C	REVISED STATIC PRESSURE TABLE	4/4/2018	JG
REV. NO.	DESCRIPTION	DATE	DRAWN BY

UNLESS OTHERWISE SPECIFIED  
DIMENSION ARE IN INCHES.

TOLERANCE UNLESS NOTED:

X.X	±0.060
X.XX	±0.030
X.XXX	±0.010
ANGLE	±1°
FRACTION	±1/16

MAX HOLE BREAKOUT:  
15% OF MATERIAL THICKNESS

5101 Blue Mound Road  
Fort Worth, Texas 76106  
Phone: 817-509-2300  
Fax: 817-831-3110

THIRD ANGLE PROJECTION

ALL-LITE

THIS DRAWING AND THE DESIGN REPRESENTED ARE THE CONFIDENTIAL AND PROPRIETARY PROPERTY OF PCI INDUSTRIES AND MAY NOT BE DISCLOSED, LOANED, COPIED, OR USED FOR ANY PURPOSE OTHER THAN DESIGN REVIEW AND APPROVAL WITHOUT THE EXPRESS WRITTEN CONSENT OF PCI INDUSTRIES.

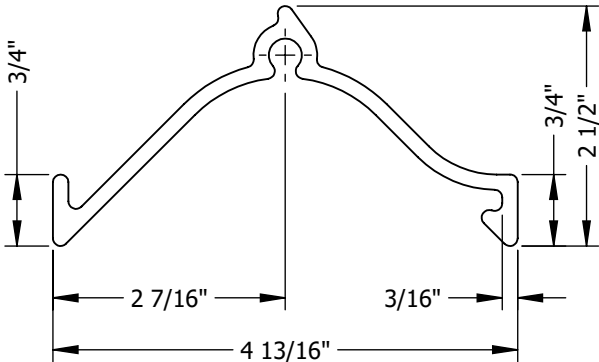
DRAWING DESCR: EXTRUDED PART DETAILS				
PROJECT: XAV-545 FEMA 361/320 GRILLE ASSEMBLY & INSTALLATION DETAILS				
LOCATION:				
CUSTOMER:				
PROJ. MGR.: NATHAN WOODWORTH		DRAWN BY: LGH		
DATE: 12/14/2017	CHK'D BY: JG/nww	ORDER NUMBER	P.O. NUMBER	DRAWING NUMBER
SHEET: 16 of 17	SCALE: AS NOTED			60132 D-12



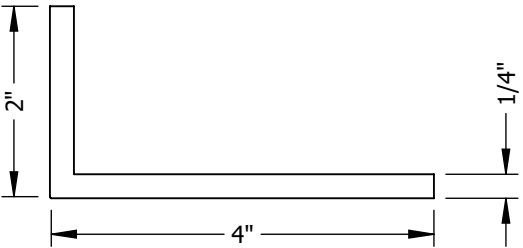
I:\Engineering Library\ECN-EIN\2023\ECN 23-0089 - XAV-545 Installation Dwg Update\Models\

EXTRUDED PART  
DETAILS

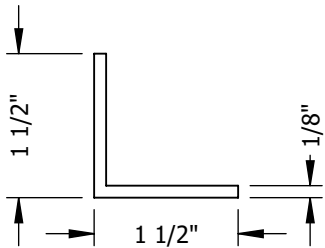
DESCRIPTION: BLADE XAV-545 W/CREW BOSS  
MATERIAL: 6005-T6 ALUMINUM  
POTTORFF PART NO: 63165  
SCALE: 6" = 1'



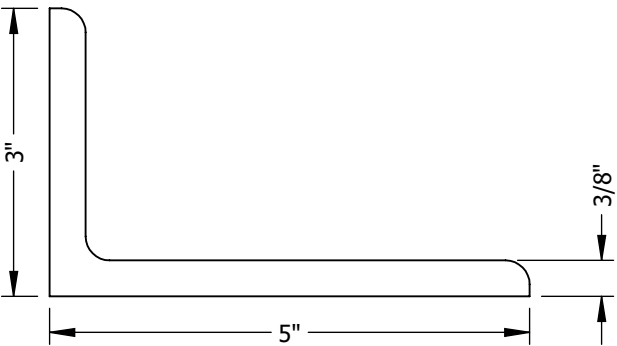
DESCRIPTION: 2" X 4" X 1/4" ANGLE  
MATERIAL: 6063-T5 ALUMINUM  
POTTORFF PART NO: 12937  
SCALE: 6" = 1'-0"

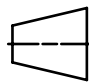



DESCRIPTION: 1-1/2" X 1-1/2" X 1/8" ANGLE  
MATERIAL: 6063-T5 ALUMINUM  
POTTORFF PART NO: 51524  
SCALE: 6" = 1'



DESCRIPTION: 3" X 5" X 3/8" ANGLE  
MATERIAL: 6061-T6 ALUMINUM  
POTTORFF PART NO: 50498  
SCALE: 6" = 1'-0"



H	UPDATE DIMENSIONS SHEET D-8 (ECN 23-0089)	10/16/2023	MSM	UNLESS OTHERWISE SPECIFIED DIMENSION ARE IN INCHES.  TOLERANCE UNLESS NOTED: X.X ±0.060 X.XX ±0.030 X.XXX ±0.010 ANGLE ±1° FRACTION ±1/16  MAX HOLE BREAKOUT: 15% OF MATERIAL THICKNESS	5101 Blue Mound Road Fort Worth, Texas 76106 Phone: 817-509-2300 Fax: 817-831-3110	<div>THIRD ANGLE PROJECTION</div> <div></div>	<div>ALL-LITE</div> <div>THIS DRAWING AND THE DESIGN REPRESENTED ARE THE CONFIDENTIAL AND PROPRIETARY PROPERTY OF PCI INDUSTRIES AND MAY NOT BE DISCLOSED, LOANED, COPIED, OR USED FOR ANY PURPOSE OTHER THAN DESIGN REVIEW AND APPROVAL WITHOUT THE EXPRESS WRITTEN CONSENT OF PCI INDUSTRIES.</div>	DRAWING DESCR: EXTRUDED PART DETAILS			
G	UPDATE NOTES (ECN 23-0041)	4/5/2023	MSM					PROJECT: XAV-545 FEMA 361/320 GRILLE ASSEMBLY & INSTALLATION DETAILS			
F	ECN 22-0105	1/30/2023	MSM					LOCATION:			
E	ECN 21-0020	3/11/2021	MRS					CUSTOMER:			
D	ECN 18-0054	9/21/2018	LGH / NWW					PROJ. MGR.: NATHAN WOODWORTH    DRAWN BY: LGH			
C	REVISED STATIC PRESSURE TABLE	4/4/2018	JG			DATE: 12/14/2017	CHK'D BY: JG/nww	ORDER NUMBER	P.O. NUMBER	DRAWING NUMBER	
REV. NO.	DESCRIPTION	DATE	DRAWN BY			SHEET: 17 of 17	SCALE: AS NOTED			60132 D-13	