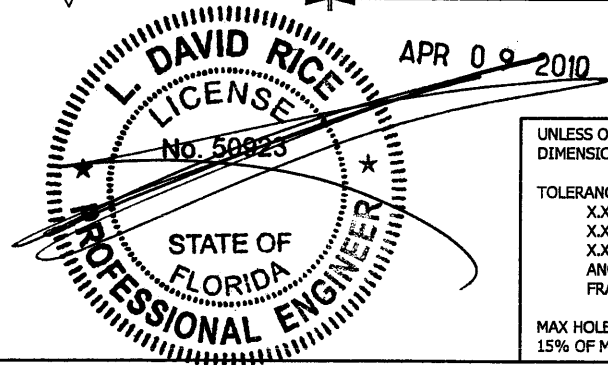


RICE

ENGINEERING
 105 School Creek Trail
 Luxemburg, WI 54217
 Phone: 920.845.1042
 Fax: 920.845.1048
 www.rice-inc.com

Florida Firm No: F-01000005061
 Certificate of Authorization: #9090
 L. David Rice
 Registration No: 50923



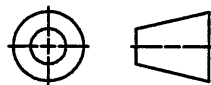
UNLESS OTHERWISE SPECIFIED
 DIMENSION ARE IN INCHES.

TOLERANCE UNLESS NOTED:
 X.X ±0.030
 X.XX ±0.015
 X.XXX ±0.010
 ANGLE ±1°
 FRACTION ±1/16

MAX HOLE BREAKOUT:
 15% OF MATERIAL THICKNESS

5101 Blue Mound Road
 Fort Worth, Texas 76106
 Phone: 817-509-2300
 Fax: 817-831-3110

THIRD ANGLE PROJECTION



ALL-LITE
ARCHITECTURAL PRODUCTS

THIS DRAWING AND THE DESIGN REPRESENTED ARE
 THE CONFIDENTIAL AND PROPRIETARY PROPERTY OF
 PCI INDUSTRIES AND MAY NOT BE DISCLOSED, LOANED,
 COPIED, OR USED FOR ANY PURPOSE OTHER THAN DESIGN
 REVIEW AND APPROVAL WITHOUT THE EXPRESS WRITTEN
 CONSENT OF PCI INDUSTRIES.

DRAWING DESCR: ATTACHMENT ELEVATIONS & DETAILS

PROJECT: FLORIDA BUILDING CODE LOUVERS

LOCATION:

CUSTOMER:

PROJ. MGR:

DRAWN BY: TB

DATE: 11/24/2009

CHK'D BY:

ORDER NUMBER

P.O. NUMBER

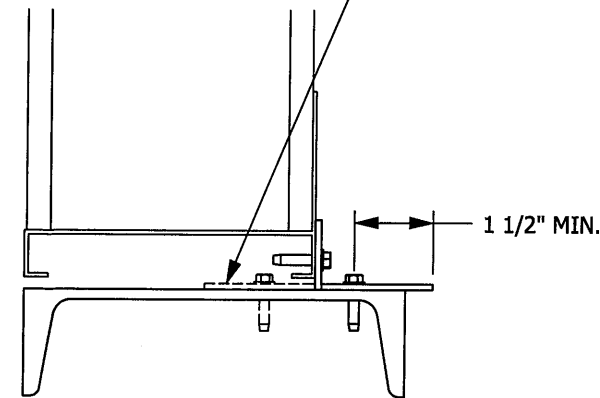
DRAWING NUMBER

SHEET: 1 of 4

SCALE: NTS

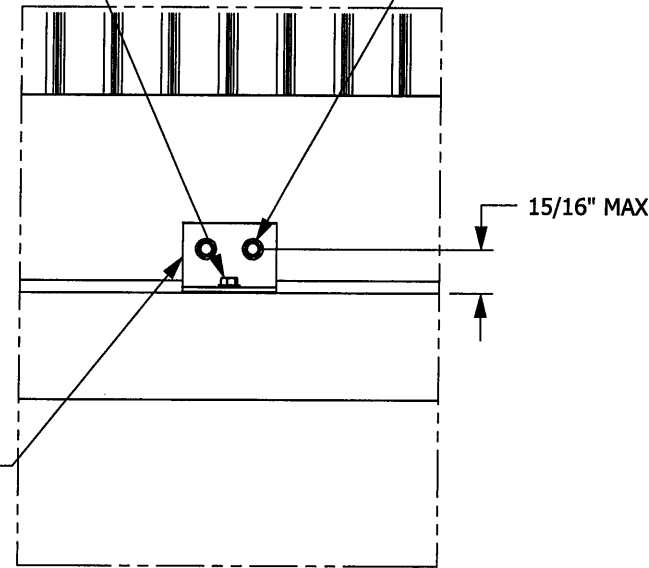
ATTACHMENT

REVERSE ATTACHMENT OPTION



#10-24 x 3/4" SST TEK SCREW PROVIDED BY OTHERS

#10-24 x 3/4" SST TEK SCREW PROVIDED BY POTTORFF

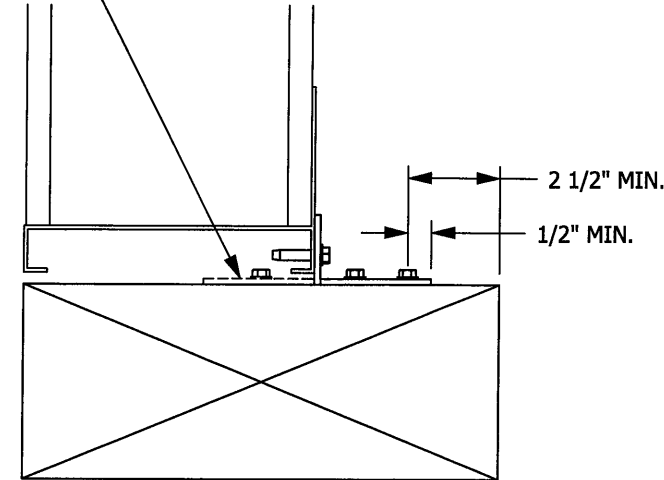


ATTACHMENT DETAILS
STEEL CONDITION

#10-24 x 3/4" SST TEK SCREW PROVIDED BY POTTORFF

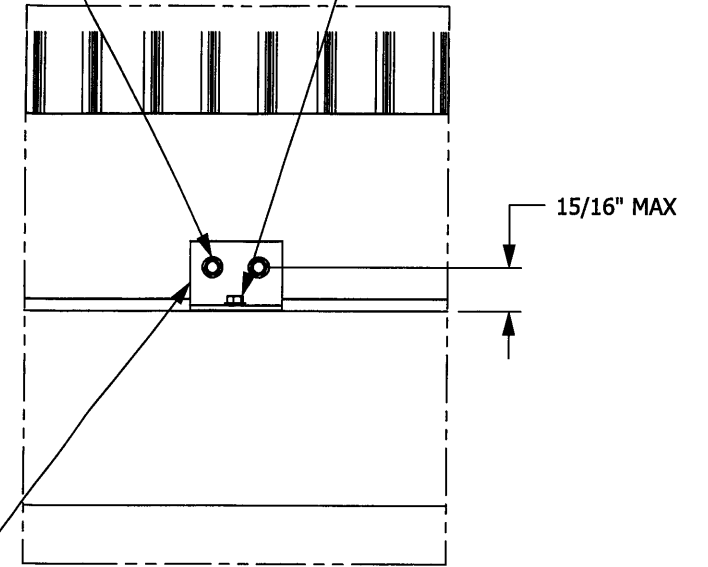
2X 1/4" STEEL LAG BOLT 1 1/4" MIN. EMBEDMENT PROVIDED BY OTHERS

REVERSE ATTACHMENT OPTION



2 1/2" MIN.
1/2" MIN.

2" x 1 1/2" x 1/8" x 2" L ALUMINUM ANGLE



ATTACHMENT DETAILS
WOOD CONDITION

INSTALLATION NOTES:

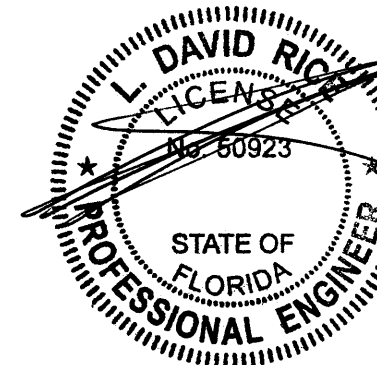
- 1) DRAWING INCLUDES INSTALLATION DETAILS TO ATTAIN MAXIMUM DESIGN PRESSURES FOR LOUVER PER CHARTS ON DRAWING 6
- 2) IT IS ASSUMED THAT THE LOUVER SYSTEMS DO NOT SUPPORT ANY LOADS TRANSFERRED FROM THE BUILDING.
- 3) IT IS ASSUMED THAT THE BUILDING CONDITIONS ARE ADEQUATELY DESIGNED TO SUPPORT LOADS IMPARTED BY THE LOUVER SYSTEM.
- 4) INSTALLER TO PROVIDE GASKET MATERIAL BETWEEN DISSIMILAR MATERIALS IN ORDER TO PROTECT FROM CORROSION.
- 5) CRITICAL EQUIPMENT TO BE PROTECTED FROM MOISTURE INGRESS.
- 6) OTHER BUILDING CONDITIONS THAN THOSE DENOTED CAN BE UTILIZED IF ANALYZED AND APPROVED BY A PROFESSIONAL ENGINEER.
- 7) MULTI-SECTION WIDE AND HIGH LOUVER SYSTEMS ARE ALLOWABLE PROVIDED THE INDIVIDUAL SECTIONS ARE SUPPORTED PER THE DETAIL ON THIS DRAWING AND A SUITABLE STRUCTURE IS ANALYZED AND APPROVED BY A PROFESSIONAL ENGINEER.
- 8) ALL STEEL SUBSTRATE SHALL BE 18 GA STUD EQUIVALENT OR STRONGER.
- 9) ALL WOOD SUBSTRATE SHALL BE G=0.42 DENSITY OR BETTER.

APR 09 2010

RICE
ENGINEERING

105 School Creek Trail
Luxemburg, WI 54217
Phone: 920.845.1042
Fax: 920.845.1048
www.rice-inc.com

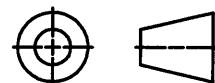
Florida Firm No: F-0100005061
Certificate of Authorization: #9090
L. David Rice
Registration No: 50923



UNLESS OTHERWISE SPECIFIED DIMENSION ARE IN INCHES.
TOLERANCE UNLESS NOTED:
X.X ±0.030
X.XX ±0.015
X.XXX ±0.010
ANGLE ±1°
FRACTION ±1/16
MAX HOLE BREAKOUT: 15% OF MATERIAL THICKNESS

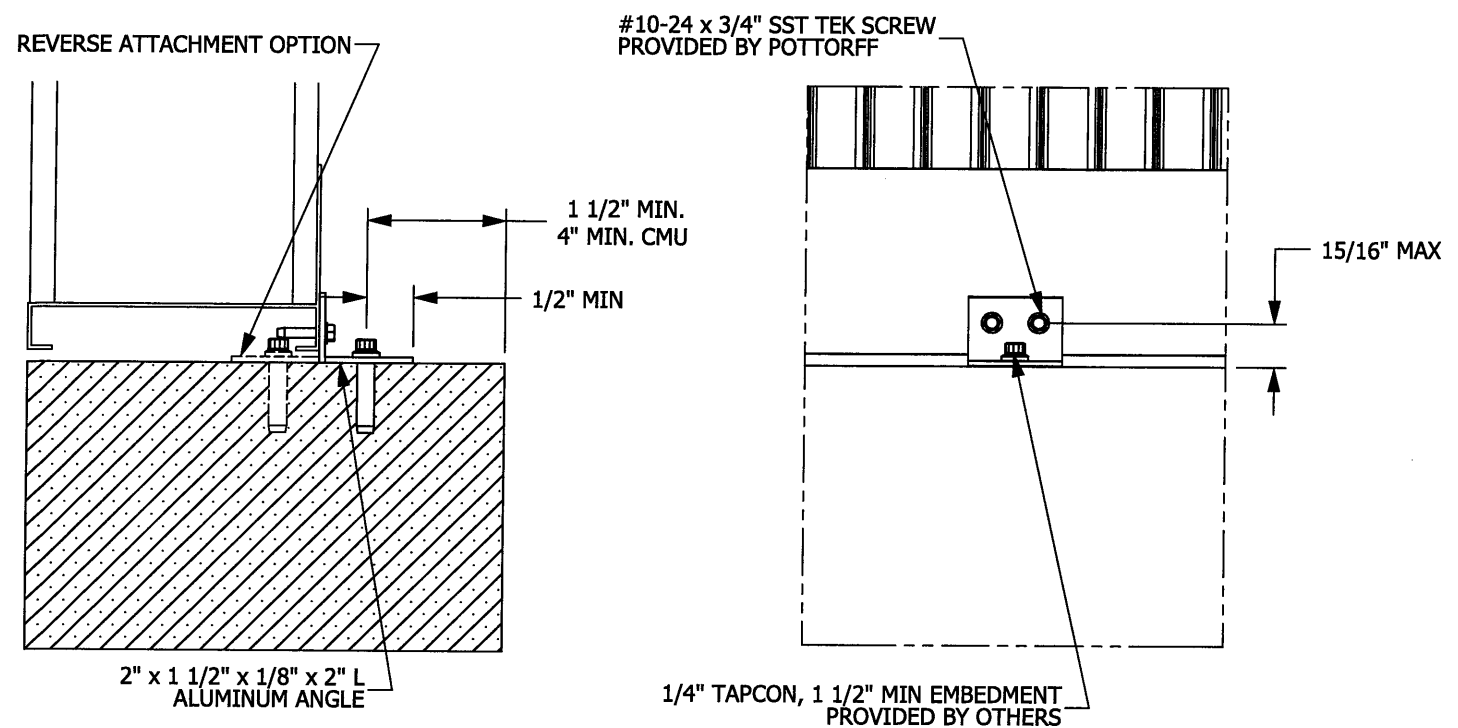
5101 Blue Mound Road
Fort Worth, Texas 76106
Phone: 817-509-2300
Fax: 817-831-3110

THIRD ANGLE PROJECTION

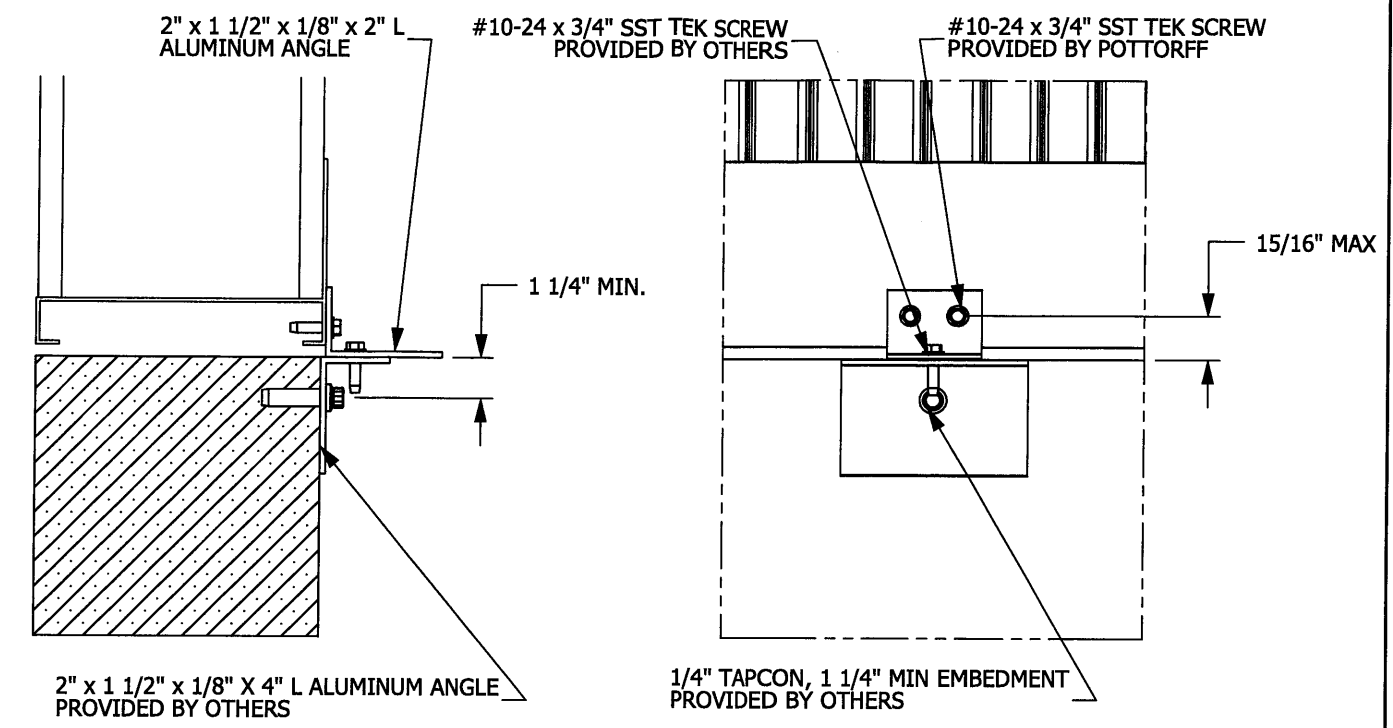


ALL-LITE
ARCHITECTURAL PRODUCTS
THIS DRAWING AND THE DESIGN REPRESENTED ARE THE CONFIDENTIAL AND PROPRIETARY PROPERTY OF PCI INDUSTRIES AND MAY NOT BE DISCLOSED, LOANED, COPIED, OR USED FOR ANY PURPOSE OTHER THAN DESIGN REVIEW AND APPROVAL WITHOUT THE EXPRESS WRITTEN CONSENT OF PCI INDUSTRIES.

DRAWING DESCR: ATTACHMENT DETAILS, STEEL & WOOD			
PROJECT: FLORIDA BUILDING CODE LOUVERS			
LOCATION:			
CUSTOMER:			
PROJ. MGR:	DRAWN BY: TB		
DATE: 11/24/2009	CHK'D BY:	ORDER NUMBER	P.O. NUMBER
SHEET: 2 of 4	SCALE: NTS		DRAWING NUMBER STEEL & WOOD CONDITIONS



**ATTACHMENT DETAIL
MASONRY CONDITION (SHEAR CONNECTION)**



**ATTACHMENT DETAIL
MASONRY CONDITION (TENSION CONNECTION)**

INSTALLATION NOTES:

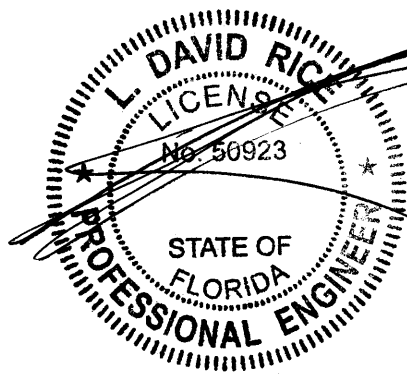
- 1) DRAWING INCLUDES INSTALLATION DETAILS TO ATTAIN MAXIMUM DESIGN PRESSURES FOR LOUVER PER CHARTS ON DRAWING 6
- 2) IT IS ASSUMED THAT THE LOUVER SYSTEMS DO NOT SUPPORT ANY LOADS TRANSFERRED FROM THE BUILDING.
- 3) IT IS ASSUMED THAT THE BUILDING CONDITIONS ARE ADEQUATELY DESIGNED TO SUPPORT LOADS IMPARTED BY THE LOUVER SYSTEM.
- 4) INSTALLER TO PROVIDE GASKET MATERIAL BETWEEN DISSIMILAR MATERIALS IN ORDER TO PROTECT FROM CORROSION.
- 5) CRITICAL EQUIPMENT TO BE PROTECTED FROM MOISTURE INGRESS.
- 6) OTHER BUILDING CONDITIONS THAN THOSE DENOTED CAN BE UTILIZED IF ANALYZED AND APPROVED BY A PROFESSIONAL ENGINEER.
- 7) MULTI-SECTION WIDE AND HIGH LOUVER SYSTEMS ARE ALLOWABLE PROVIDED THE INDIVIDUAL SECTIONS ARE SUPPORTED PER THE DETAIL ON THIS DRAWING AND A SUITABLE STRUCTURE IS ANALYZED AND APPROVED BY A PROFESSIONAL ENGINEER.
- 8) ALL CONCRETE SUBSTRATE SHALL BE 2000 PSI OR STRONGER.
- 9) ALL CMU SUBSTRATE SHALL BE ASTM C90 TYPE 2 FILLED WITH $f_m=150$ PSI GROUT

APR 09 2010

**RICE
ENGINEERING**

105 School Creek Trail
Luxemburg, WI 54217
Phone: 920.845.1042
Fax: 920.845.1048
www.rice-inc.com

Florida Firm No: F-01000005061
Certificate of Authorization: #9090
L. David Rice
Registration No: 50923



UNLESS OTHERWISE SPECIFIED DIMENSION ARE IN INCHES.

TOLERANCE UNLESS NOTED:

X.X	±0.030
X.XX	±0.015
X.XXX	±0.010
ANGLE	±1°
FRACTION	±1/16

MAX HOLE BREAKOUT:
15% OF MATERIAL THICKNESS

5101 Blue Mound Road
Fort Worth, Texas 76106
Phone: 817-509-2300
Fax: 817-831-3110

THIRD ANGLE PROJECTION

**ALL-LITE
ARCHITECTURAL PRODUCTS**

THIS DRAWING AND THE DESIGN REPRESENTED ARE THE CONFIDENTIAL AND PROPRIETARY PROPERTY OF PCI INDUSTRIES AND MAY NOT BE DISCLOSED, LOANED, COPIED, OR USED FOR ANY PURPOSE OTHER THAN DESIGN REVIEW AND APPROVAL WITHOUT THE EXPRESS WRITTEN CONSENT OF PCI INDUSTRIES.

DRAWING DESCR: ATTACHMENT DETAILS, MASONRY			
PROJECT: FLORIDA BUILDING CODE LOUVERS			
LOCATION:			
CUSTOMER:			
PROJ. MGR:		DRAWN BY: TB	
DATE: 11/24/2009	CHK'D BY:	ORDER NUMBER	P.O. NUMBER
SHEET: 3 of 4	SCALE: NTS		DRAWING NUMBER MASONRY CONDITIONS

\\Cadsrvr\tr\Tom\LOUVERS\Florida Building Code Louvers

Louver Tributary Height (In.)	ECV-645 LOUVER MODEL - Single Section Width Assemblies - Maximum Allowable Design Pressure - (PSF)																		
	Louver Width (In.)																		
	12"	18"	24"	30"	36"	42"	48"	54"	60"	66"	72"	78"	84"	90"	96"	102"	108"	114"	120"
12"	187	125	93	75	62	53	47	42	37	68	62	57	53	50	47	44	42	39	37
18"	187	125	93	75	62	53	47	42	37	68	62	57	53	50	47	44	42	39	37
24"	187	125	93	75	62	53	47	42	37	68	62	57	53	50	47	44	42	39	37
30"	187	125	93	75	62	53	47	42	37	61	56	52	48	45	42	40	37	35	34
36"	187	125	93	75	62	53	47	42	37	42	39	36	33	50	47	44	42	39	37
42"	187	125	93	75	62	53	47	42	37	54	50	46	43	40	37	35	33	32	37
48"	187	125	93	75	62	53	47	42	37	42	38	35	33	31	47	44	42	39	37
54"	187	125	93	75	62	53	47	42	37	39	57	53	49	46	43	40	38	36	37
60"	187	125	93	75	62	53	47	42	37	50	46	43	40	37	35	33	42	39	37
66"	187	125	93	75	62	53	47	42	37										
72"	187	125	93	75	62	53	47	42	37										
78"	187	125	93	75	62	53	47	42	37										
84"	187	125	93	75	62	53	47	42	37										
90"	187	125	93	75	62	53	47	42	37										
96"	187	125	93	75	62	53	47	42	37										
102"	187	125	93	75	62	53	47	42	37										
108"	187	125	93	75	62	53	47	42	37										
114"	187	125	93	75	62	53	47	42	37										
120"	187	125	93	75	62	53	47	42	37										

Louver Tributary Height (In.)	ECV - 645 LOUVER MODEL - Multiple Section Width Assemblies - Maximum Allowable Design Pressure - (PSF)																			
	Louver Width (In.)																			
	12"	18"	24"	30"	36"	42"	48"	54"	60"	66"	72"	78"	84"	90"	96"	102"	108"	114"	120"	
12"	200	200	200	200	200	200	200	200	200	200	200	200	200	200	200	200	200	200	200	
18"	200	200	200	200	200	200	200	200	200	188	172	159	148	138	129	122	115	109	103	
24"	200	200	200	200	200	200	194	172	155	141	129	119	111	103	97	91	86	82	78	
30"	200	200	200	200	200	200	177	155	138	124	113	103	95	89	83	78	73	69	65	
36"	200	200	200	200	172	148	129	115	103	94	86	79	74	69	65	61	57	54	52	
42"	200	200	200	177	148	127	111	98	89	81	74	68	63	59	55	52	49	47	44	
48"	200	200	194	155	129	111	97	86	78	70	65	60	55	52	48	46	43	41	39	
54"	200	200	172	138	115	98	86	77	69	63	57	53	49	46	43	41	38	36	34	
60"	200	200	155	124	103	89	78	69	62	56	52	48	44	41	39	36	34	33	31	
66"	200	188	141	113	94	81	70	63	56											
72"	200	172	129	103	86	74	65	57	52											
78"	200	159	119	95	79	68	60	53	48											
84"	200	148	111	89	74	63	55	49	44											
90"	200	138	103	83	69	59	52	46	41											
96"	194	129	97	78	65	55	48	43	39											
102"	182	122	91	73	61	52	46	41	36											
108"	172	115	86	69	57	49	43	38	34											
114"	163	109	82	65	54	47	41	36	33											
120"	155	103	78	62	52	44	39	34	31											



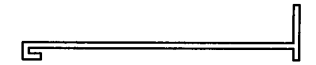
SECTION D-D



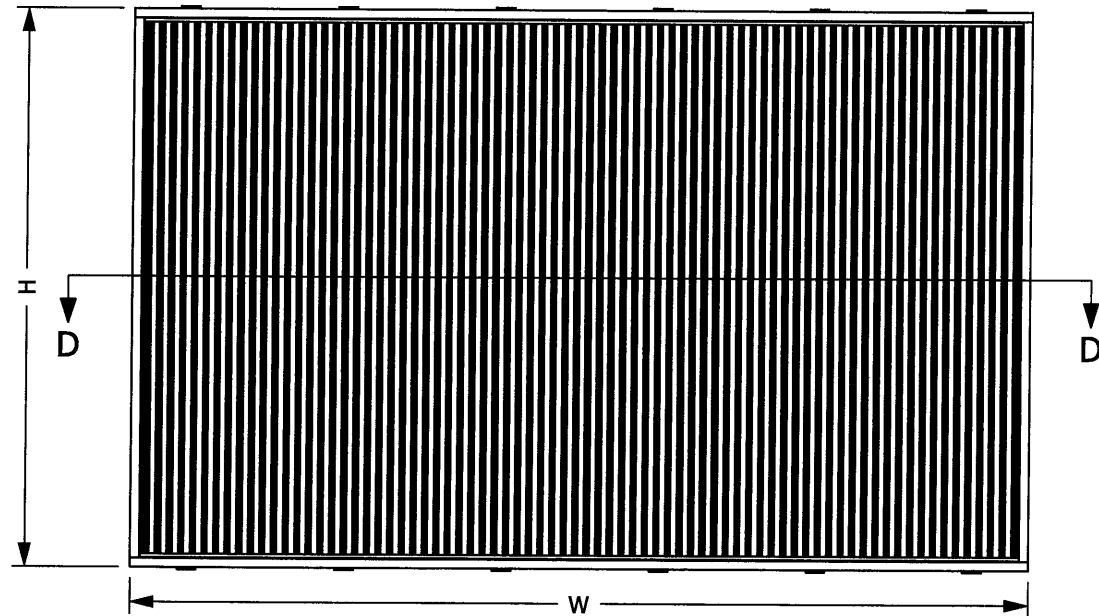
I-MULLION, ECV-645
SCALE 1:4



BLADE, ECV-645
SCALE 1:4



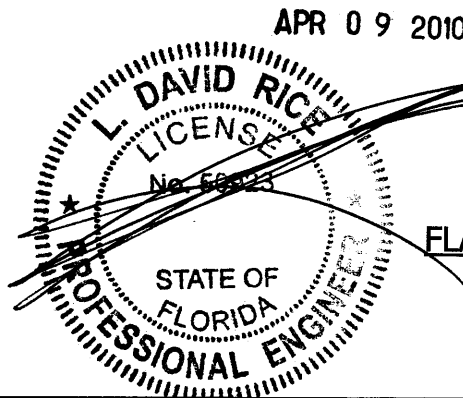
SUBFRAME MEMBER, ECV-645
SCALE 1:4



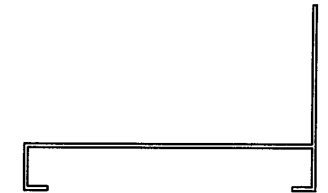
RICE
ENGINEERING

105 School Creek Trail
Luxemburg, WI 54217
Phone: 920.845.1042
Fax: 920.845.1048
www.rice-inc.com

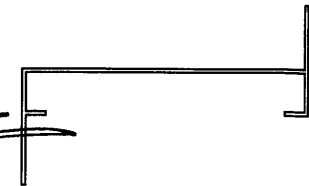
Florida Firm No: F-01000005061
Certificate of Authorization: #9090
L. David Rice
Registration No: 50923



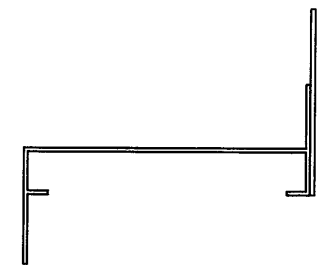
HEAD/JAMB, ECV-645
SCALE 1:4



SILL, ECV-645
SCALE 1:4



FLANGED HEAD/JAMB, ECV-645
SCALE 1:4



FLANGED SILL, ECV-645
SCALE 1:4

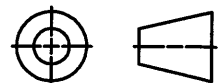
UNLESS OTHERWISE SPECIFIED
DIMENSION ARE IN INCHES.

TOLERANCE UNLESS NOTED:
X.X ±0.030
X.XX ±0.015
X.XXX ±0.010
ANGLE ±1°
FRACTION ±1/16

MAX HOLE BREAKOUT:
15% OF MATERIAL THICKNESS

5101 Blue Mound Road
Fort Worth, Texas 76106
Phone: 817-509-2300
Fax: 817-831-3110

THIRD ANGLE PROJECTION



ALL-LITE
ARCHITECTURAL PRODUCTS

THIS DRAWING AND THE DESIGN REPRESENTED ARE
THE CONFIDENTIAL AND PROPRIETARY PROPERTY OF
PCI INDUSTRIES AND MAY NOT BE DISCLOSED, LOANED,
COPIED, OR USED FOR ANY PURPOSE OTHER THAN DESIGN
REVIEW AND APPROVAL WITHOUT THE EXPRESS WRITTEN
CONSENT OF PCI INDUSTRIES.

DRAWING DESCR: ECV-645, ELEVATION & DETAILS

PROJECT: FLORIDA BUILDING CODE LOUVERS

LOCATION:

CUSTOMER:

PROJ. MGR:

DATE: 11/24/2009

SHEET: 4 of 4

CHK'D BY:

SCALE: 1:20

DRAWN BY: TB

ORDER NUMBER

P.O. NUMBER

DRAWING NUMBER

ECV-645