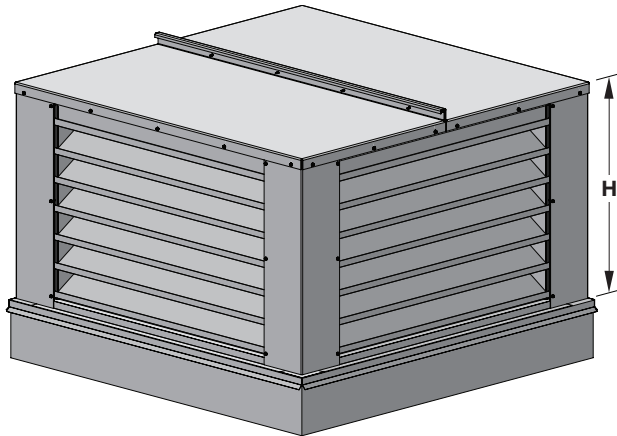


The EFD-635-PH extruded aluminum penthouse is designed for intake and exhaust applications and protection against non wind-driven rain. The EFD-635-PH serves frequently as a gravity ventilator, fan discharge cap, fresh air intake cap, sight shield, or pressure relief ventilator.



Side 1

Side 2

Standard Construction

- Material:** Mill finish 6063-T5 extruded aluminum
- Frame:** 6" deep × 0.081" thick (152 × 2) channel
- Blades:** 35° × 0.081" (2) thick drainable style
- Corner:** Boxed
- Roof:** 0.081" (2) thick formed aluminum with anti-condensate roof under coating
- Screen:** 1/2" × 0.063" (12.7 × 1.6) expanded and flattened aluminum
- Mullion:** Visible
- Minimum Size:** 12" × 12" (305 × 305), 12" (305) High
- Maximum Size:** Factory assembled: 48" × 48" (1219 × 1219)
Field erected: 96" × 120" (2438 × 3048)
Maximum height: 48" (1219)
- Design Load:** 25 psf

Options

- **Factory finish:**
 - High Performance Fluoropolymer
 - Prime Coat
 - Baked Enamel
 - Clear Anodize
 - Integral Color Anodize
- **Alternate bird or insect screens**
- **Insulated or non-insulated blank-off panels**
- **Filter racks**
- **Hinged section (factory assembled units only)**
- **Head and/or sill flashing**
- **1/2" (13) rigid foam panel roof insulation**

EFD-635-PH

(standard)

*Louver dimensions furnished approximately 1/2" (13) undersize.

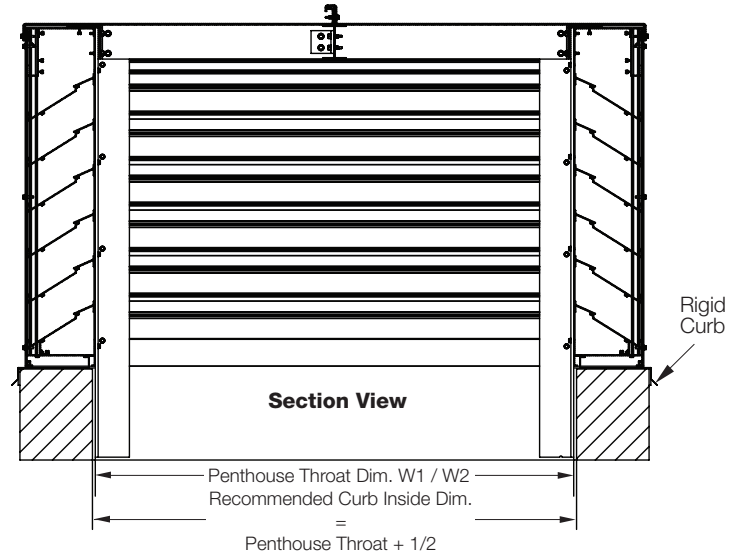
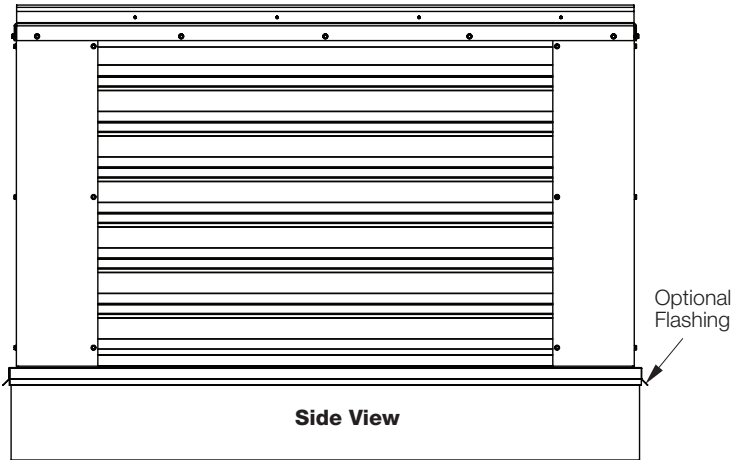
5 year
warranty

NOTE: Dimensions in parentheses () are millimeters.
Information is subject to change without notice or obligation.

Attributes

EFD-635-PH

Extruded Aluminum Penthouse
6" deep • 35° Drainable Blade



Recommended Sizing: (For optimum performance W1 and W2 should be $\geq H \times 2$)